



HPE0-J68^{Q&As}

HPE Storage Solutions

Pass HP HPE0-J68 Exam with 100% Guarantee

Free Download Real Questions & Answers **PDF** and **VCE** file from:

<https://www.pass4itsure.com/hpe0-j68.html>

100% Passing Guarantee
100% Money Back Assurance

Following Questions and Answers are all new published by HP Official Exam Center

-  **Instant Download** After Purchase
-  **100% Money Back** Guarantee
-  **365 Days** Free Update
-  **800,000+** Satisfied Customers





QUESTION 1

Which feature enables a non-disruptive environment where host-based multi-pathing software is not affected in the event of a firmware upgrade?

- A. HPE 3PAR Access Guard
- B. HPE 3PAR Persistent Ports
- C. HPE 3PAR Persistent Cache
- D. HPE 3PAR MPIO

Correct Answer: B

QUESTION 2

Match the type of storage found in today's market to the HPE storage solution optimized for that capacity?

- A. HPE 3PAR StoreServ - Block
- B. MSA - Block
- C. Nimble - Block
- D. Scalability - Object
- E. StoreEasy - File
- F. StoreVirtual - Block

Correct Answer: A

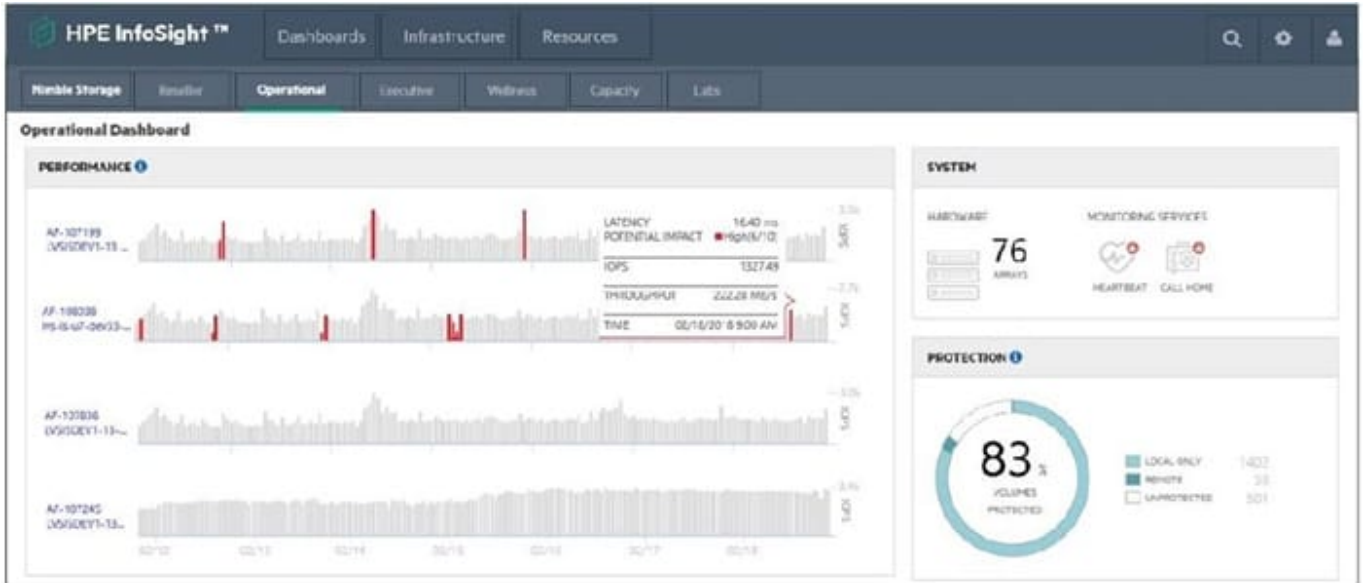
QUESTION 3

HOTSPOT

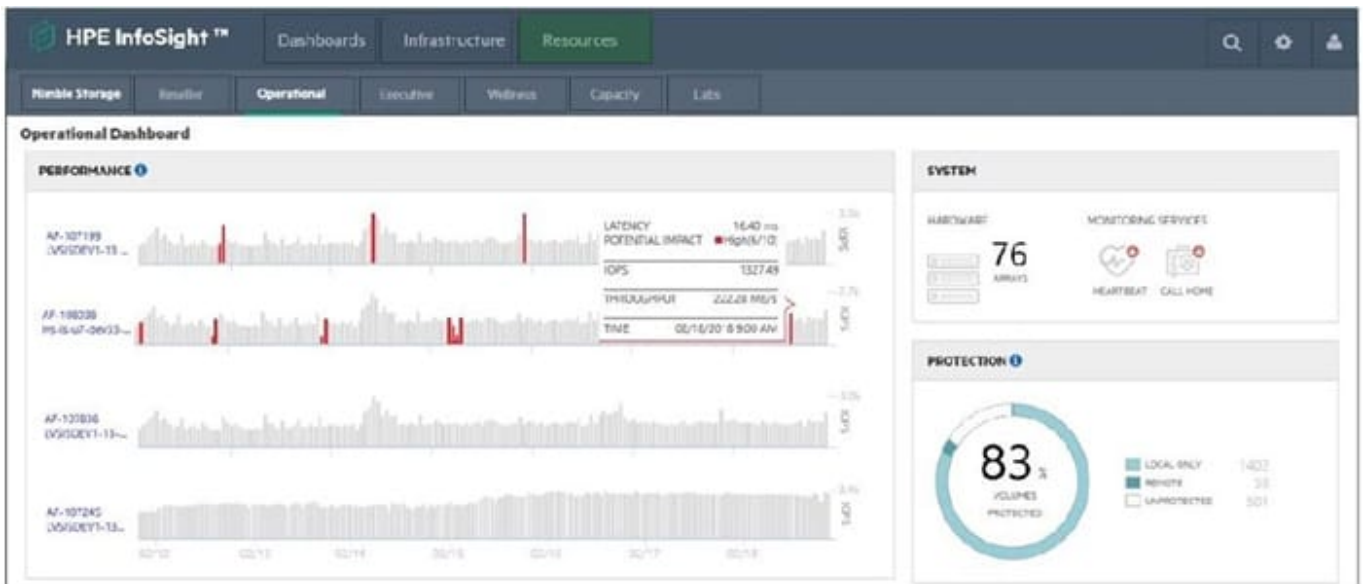
A customer has a Nimble HF40 and needs to create a support ticket.

Click the option in the InfoSight portal where the customer can perform this task.

Hot Area:



Correct Answer:



QUESTION 4

HOTSPOT

You are configuring a new HPE 3PAR solution and need to create a new disk group with a defined RAID level. Click the appropriate option where the RAID can be selected.

Hot Area:



Correct Answer:



QUESTION 5

Which built-in HPE 3PAR StoreServ technology reduces database transaction logs response time?

- A. Express Writes
- B. Adaptive Flash Cache
- C. Thin provisioning
- D. Thin Deduplication

Correct Answer: B



QUESTION 6

DRAG DROP

Match each HPE storage solution to its use case.

Select and Place:

Solution		Use Case
Primera	<input type="text"/>	Smaller site traditional deployments
MSA	<input type="text"/>	Complete solution for virtualized environments
Nimble	<input type="text"/>	Enterprise class storage for SMB
Nimble dHCI	<input type="text"/>	Enterprise class storage with Tier-0 features
SimpliVity	<input type="text"/>	hyperconverged control with independent compute and storage scalability

Correct Answer:

Solution		Use Case
Nimble	<input type="text"/>	Smaller site traditional deployments
Nimble dHCI	<input type="text"/>	Complete solution for virtualized environments
MSA	<input type="text"/>	Enterprise class storage for SMB
Primera	<input type="text"/>	Enterprise class storage with Tier-0 features
SimpliVity	<input type="text"/>	hyperconverged control with independent compute and storage scalability

QUESTION 7

Refer to the exhibit:



Port ID	Label	System	Port Type	Port State
0:1:1	-	3PAR	Host	Ready
0:1:2	-	3PAR	Free	Loss Sync
0:2:1	-	3PAR	Host	Ready
0:2:2	-	3PAR	Host	Offline
0:0:1	DP-1	3PAR	Disk	Ready
0:0:2	DP-2	3PAR	Disk	Ready
0:3:1	RCIP0	3PAR	RC	Offline

0:1:1 | Overview

General

Port ID: 0:1:1
 System: 3PAR
 Label: -
 Protocol: FC
 Rate: 8 Gbps
 Adapter type: EMULEX LPe12002
 CNA port: No
 WWN: XXXXXXXXXX
 Port type: Host
 Mode: Target
 Mode change: Allowed
 Connected devices: 3 hosts

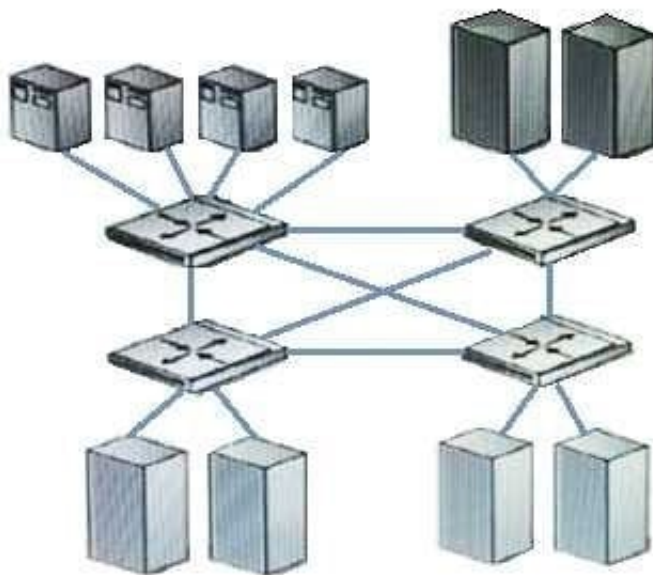
Which type of data format do you expect in the red rectangle?

- A. 172.16.31.11/24
- B. 94:b4:0f:cd:34:8a
- C. iqn.2015-02.com.hpe:oneview-vcgeDav000
- D. 20110002AC00736E235.524

Correct Answer: D

QUESTION 8

Exhibit:



Which fabric design is shown?



- A. meshed
- B. single fabric
- C. cascaded
- D. core-edge

Correct Answer: A

QUESTION 9

A customer with restricted budget has an existing HPE 3PAR storeserver 8200 using 10kfast class and near line drives because of the implementation of new application .the workload has shifted to be read intensive therefore ,they want to increase the read I/O performance What should they add to their environment?

- A. A tier with 15k fast class 600 GB drive for new CPG, configure AO policy to advantage of new resources
- B. Two 400 GB SSD drives and enable adaptive flash cache (page 173) eed to check
- C. A tier with 15k fast class drive and implement thin provisioned deduplicated virtual volumes
- D. A tier of SSD and implement thin provisioned virtual volume

Correct Answer: B

QUESTION 10

A Company using an existing 1GB ISCSI storage array is experiencing storage access performance issue. They are interested in deploying HPE 3PAR Storeserv with 16GB /S FC end to-end to improve the performance to the minimal changes to the environment. The existing environment consists of these HPE products

1.
HPE C7000 Blade system platinum blade enclosure with HP virtual connect Flex 10 interconnect modules.
2.
Configuration of HPE Proliant Gen8 and Gen9 blade servers
3.
HPE 2920 Switches

Which HPE products must be included to support new HPE 3PAR Storeserv?(Select two)

- A. HPE B-Series 16GB SAN switch for HPE Blade system C-class series
- B. HPE 16GB/s Fibre channel HBA for Blade servers
- C. HP 5900CP switch series with 16GB/S SFP+ Modules
- D. HPE Flex fabric 20GB,2-Port 630 FLB adapter



E. HPE Virtual connect Flex fabric 20/40 f8 modules

Correct Answer: AB

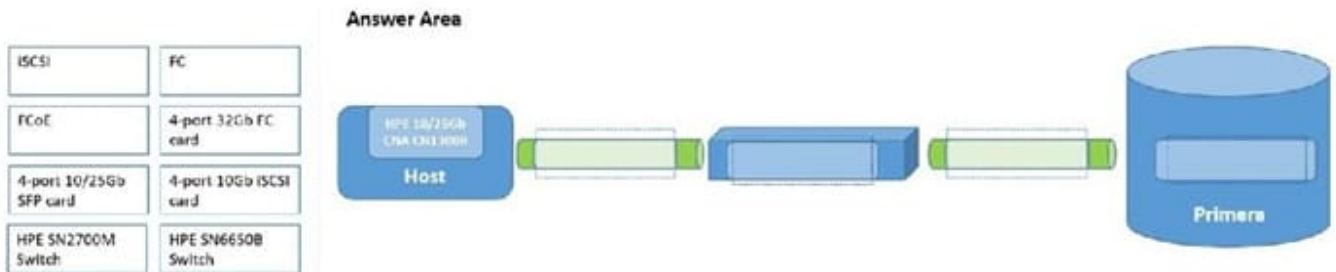
QUESTION 11

DRAG DROP

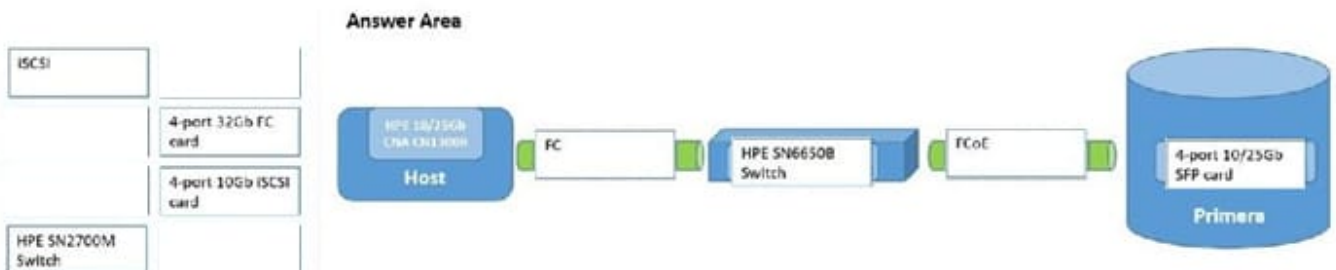
A customer wants to implement a new storage network, but wants to retain the ability to connect with legacy fiber channel-based components.

Drag the appropriate component to each box on the diagram to design a new storage network.

Select and Place:



Correct Answer:



QUESTION 12

A customer has a 3PAR storeserv with FC and SSD drives who would like to improve the performance for random reads. Which 3PAR Storeserve feature would provide better read performance?

- A. Adaptive Flash Cache
- B. Deduplication
- C. Smart Cache
- D. Express Layout



Correct Answer: A

QUESTION 13

DRAG DROP

Match each address with the associated address type.

Select and Place:

Type

Address Format

FC

20:32:00:60:69:e2:19:82

IPv6

00:1B:44:11:3A:B7

iSCSI

iqn.2000-05.com.3pardata:20210002ac00851c:15.372.28.0

MAC

fe80::85b0:5df6:1dfb:6793

Correct Answer:

Type

Address Format

MAC

20:32:00:60:69:e2:19:82

FC

00:1B:44:11:3A:B7

iSCSI

iqn.2000-05.com.3pardata:20210002ac00851c:15.372.28.0

IPv6

fe80::85b0:5df6:1dfb:6793

QUESTION 14

Which HPE 3PAR StoreServ feature allows a host to continue I/O uninterrupted during a firmware upgrade?



- A. Peer Persistence
- B. Persistent Ports
- C. Persistent Memory
- D. Persistent Cache

Correct Answer: B

QUESTION 15

Which HPE 3Par feature improves CPU utilization ,reduces latency and improve IOPS ?

- A. Zero Detect
- B. Persistent Cache
- C. Express Indexing
- D. Express Writes

Correct Answer: D

[HPE0-J68 PDF Dumps](#)

[HPE0-J68 Practice Test](#)

[HPE0-J68 Exam Questions](#)