



ESSENTIALS^{Q&As}

Fireware Essentials Exam

Pass WatchGuard ESSENTIALS Exam with 100% Guarantee

Free Download Real Questions & Answers **PDF** and **VCE** file from:

<https://www.pass4itsure.com/essentials.html>

100% Passing Guarantee
100% Money Back Assurance

Following Questions and Answers are all new published by
WatchGuard Official Exam Center

-  **Instant Download** After Purchase
-  **100% Money Back** Guarantee
-  **365 Days** Free Update
-  **800,000+** Satisfied Customers





QUESTION 1

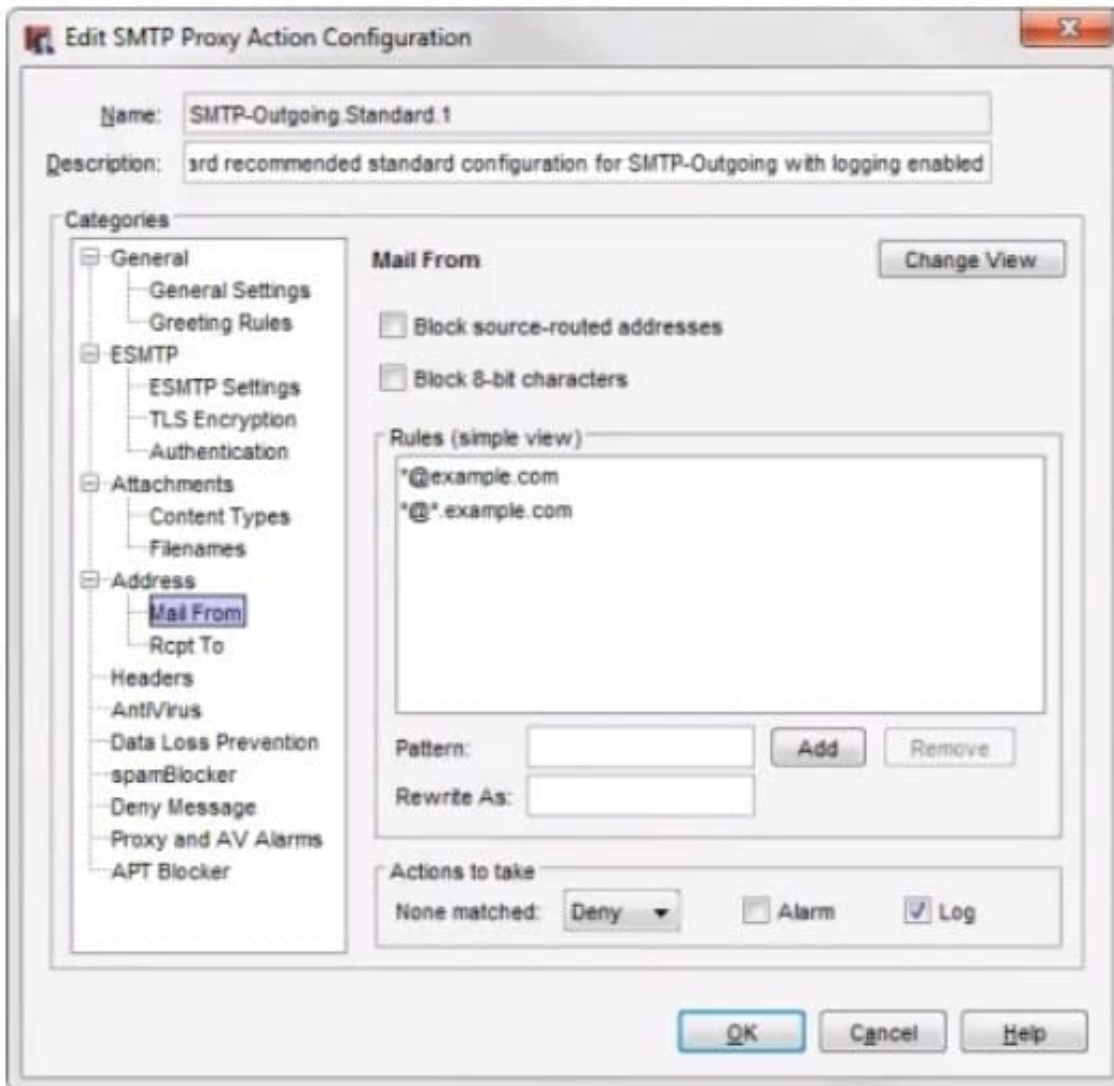
What is one reason that users could see a certificate warning in their web browsers when they connect to Fireware XTM Web UI? (Select one.)

- A. The Firebox or XTM device uses the default self-signed certificate.
- B. The authentication server does not respond after three minutes.
- C. The user has been previously added to the Blocked Sites list.
- D. The user or group is not present in the Firebox User database.

Correct Answer: A

QUESTION 2

From the SMTP proxy action settings in this image, which of these options is configured for outgoing SMTP traffic? (Select one.)



- A. Rewrite the Mail From header for the example.comdomain.
- B. Deny incoming mail from the example.comdomain.
- C. Prevent mail relay for the example.comdomain.
- D. Deny outgoing mail from the example.comdomain.

Correct Answer: B

QUESTION 3

Match each WatchGuard Subscription Service with its function. Manages use of applications on your network. (Choose one).

- A. Reputation Enable Defense RED



- B. Data Loss Prevention DLP
- C. Intrusion Prevention Server IPS
- D. Application Control
- E. APT Blocker

Correct Answer: D

Application Control keeps unproductive, inappropriate, and dangerous applications off-limits.

Stay on top of the applications running on your network for tight security and high productivity with a subscription to WatchGuard Application Control. It allows you to establish which applications can be used within your organization, by whom, and when.

Reference: http://www.watchguard.com/docs/brochure/wg_application-control_ds.pdf

QUESTION 4

In the default Firebox configuration file, which policies control management access to the device? (Select two.)

- A. WatchGuard
- B. FTP
- C. Ping
- D. WatchGuard Web UI
- E. Outgoing

Correct Answer: AD

QUESTION 5

With the policies configured as shown in this image, HTTP traffic can be sent and received through branch office VPN tunnel.1 and tunnel.2.



Order /	Action	Policy Name	Policy Type	From	To
1	✓	tunnel1-http.out	HTTP	Any	tunnel 1
2	✓	tunnel1-http.in	HTTP	tunnel 1	Any
3	✓	WatchGuard Web UI	WG-Fireware-X...	Any-Trusted, Any-Optional	Firebox
4	✓	Ping	Ping	Any-Trusted, Any-Optional	Any
5	✓	WatchGuard	WG-Firebox-Mgmt	Any-Trusted, Any-Optional	Firebox
6	✓	Outgoing	TCP-UDP	Any-Trusted, Any-Optional	Any-External
7	✓	BOVPN-Allow.out	Any	Any	tunnel 2, tunnel 1
8	✓	BOVPN-Allow.in	Any	tunnel 2, tunnel 1	Any

A. True

B. False

Correct Answer: B

QUESTION 6

You can configure your Firebox to send log messages to how many WatchGuard Log Servers at the same time? (Select one.)

A. One

B. Two

C. As many as you have configured on your network.

Correct Answer: B

QUESTION 7

You can configure the SMTP-proxy policy to restrict email messages and email content based on which of these message characteristics? (Select four.)



- A. Sender Mail From address
- B. Check URLs in message with WebBlocker
- C. Email message size
- D. Attachment file name and content type
- E. Maximum email recipients

Correct Answer: ACDE

A: Another way to protect your SMTP server is to restrict incoming traffic to only messages that use your company domain. In this example, we use the mywatchguard.com domain. You can use your own company domain.

1.

From the SMTP-Incoming Categories list, select Address > Rcpt To.

2.

In the Pattern text box, type *.mywatchguard.com. Click Add. This denies any email messages with a Rcpt To address that does not match the company domain.

3.

Click OK to close the SMTP Proxy Action Configuration dialog box.

C: In this exercise we will reduce the maximum email size to 5 MB (5, 000 kilobytes).

1.

From the SMTP Proxy Action dialog box under the Categories list, select General > General Settings.

2.

Find the Limits section. In the Set the maximum email size value box, type 5000.

D: Example: He must configure the Firebox to allow Microsoft Access database files to go through the SMTP proxy. He must also configure the Firebox to deny Apple iTunes MP4 files because of a recent vulnerability announced by Apple.

1.

From the SMTP-Incoming Categories list, select Attachments > Content Types.

2.

In the Actions to take section, use the None Matched drop-down list to select Allow.

This allows all content types through Firebox to the SMTP server. After Successful Company is able to add



in the specific content types they want to allow, they set this parameter to strip content type that does not match their list of allowed content types.

From the SMTP-Incoming Categories list, select Attachments > Filenames.

4. The filename extension for Microsoft Access databases is “.mdb”. In the list of filenames, find and select .mdb. Click Remove. Click Yes to confirm.

3. If no rules match, the Action to take option is set to allow the attachment. In this example, MS Access files are now allowed through the Firebox.

5. In the Pattern text box, type *.mp4. Click Add.

This rule configures the Firebox to deny all files with the Apple iTunes “.mp4” file extension bound for the SMTP server.

E: The Set the maximum email recipient checkbox is used to set the maximum number of email recipients to which a message can be sent in the adjacent text box that appears, type or select the number of recipients.

The XTM device counts and allows the specified number of addresses through, and then drops the other addresses. For example, if you set the value to 50 and there is a message for 52 addresses, the first 50 addresses get the email message. The last two addresses do not get a copy of the message.

Incorrect:

Not B: Webblocker is configured through a HTTP-policy, not through an SMTP policy.

Reference: Fireware Basics, Courseware: WatchGuard System Manager 10, pages 125, 126

Reference: http://watchguard.com/help/docs/wsm/xtm_11/en-us/content/en-us/proxies/smtp/proxy_smtp_gen_settings_c.html

QUESTION 8

Match each WatchGuard Subscription Service with its function.

Cloud based service that controls access to website based on a site's previous behavior. (Choose one).

- A. Reputation Enable Defense RED
- B. Data Loss Prevention DLP
- C. WebBlocker
- D. Intrusion Prevention Server IPS



E. Application Control

F. Quarantine Server

Correct Answer: A

Reputation Enable Device (RED) is a cloud-based reputation service that controls user's ability to get main access to web malicious sites. Works in concert with the WebBlocker module.

Reference: <http://www.tomsitpro.com/articles/network-security-solutions-guide, 2-866-6.html>

QUESTION 9

A user receives a deny message that the installation file (install.exe) is blocked by the HTTP-proxy policy and cannot be downloaded. Which HTTP proxy action rule must you modify to allow download of the installation file? (Select one.)

A. HTTP Request > Request Methods

B. HTTP Response > Body Content Types

C. HTTP Response > Header Fields

D. WebBlocker

E. HTTP Request > Authorization

Correct Answer: B

QUESTION 10

How can you include log messages from more than one Firebox in a single report generated by Dimension? (Select two.)

A. You cannot see report data in Dimension for more than one device.

B. Create a device group and view the reports for that group.

C. Create a report schedule that includes all the devices you want to include in the report.

D. Export report data as a single PDF file for all the devices you want to include in the report.

Correct Answer: BC

QUESTION 11

To prevent certificate error warnings in your browser when you use deep content inspection with the HTTPS proxy, you can export the proxy authority certificate from the Firebox and import that certificate to all client devices.



- A. True
- B. False

Correct Answer: A

QUESTION 12

Only 50 clients on the trusted network of your Firebox can connect to the Internet at the same time. What could cause this? (Select one.)

- A. TheLiveSecurity feature key is expired.
- B. The device feature key allows a maximum of 50 client connections.
- C. The DHCP address pool on the trusted interface has only 50 IP addresses.
- D. The Outgoing policy allows a maximum of 50 client connections.

Correct Answer: C

QUESTION 13

Which of these services would you use to allow the use of P2P programs for a specific department in your organization? (Select one.)

- A. Reputation Enabled Defense
- B. Application Control
- C. Data Loss Prevention
- D. IPS

Correct Answer: B

QUESTION 14

- A. DNS lookup
- B. MAC address lookup
- C. Traceroute
- D. Reputation lookup



E. Ping

F. TCP dump

Correct Answer: ACEF

From Firebox System Manager, you can run diagnostic tasks to review information in all the log messages from your Firebox or XTM device. This can help you debug problems on your network.

1.

On the Traffic Monitor tab, right-click a message and select Diagnostic Tasks. Or, select Tools > Diagnostic Tasks.

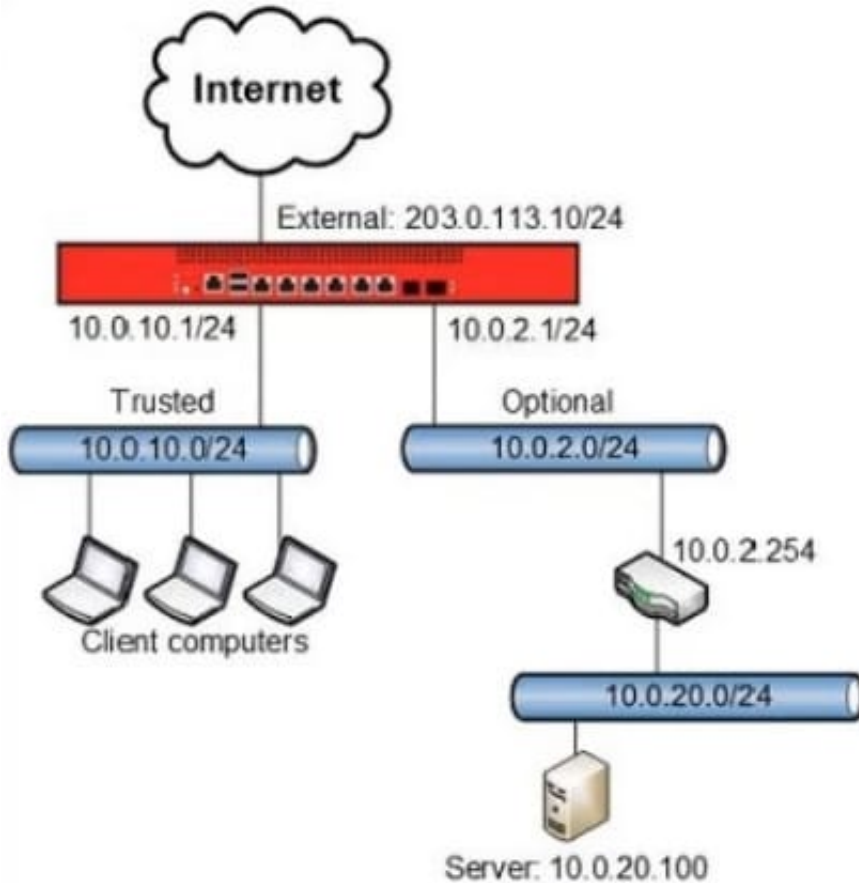
2.

From the Task drop-down list, select the task to run. Ping IPv4 Ping IPv6 traceroute DNS Lookup TCP Dump

Reference: http://watchguard.com/help/docs/wsm/xtm_11/en-us/content/en-us/fsm/log_message_learn_more_wsm.html

QUESTION 15

Clients on the trusted network need to connect to a server behind a router on the optional network. Based on this image, what static route must be added to the Firebox for traffic from clients on the trusted network to reach a server at 10.0.20.100? (Select one.)



- A. Route to 10.0.20.0/24, Gateway 10.0.2.1
- B. Route to 10.0.20.0/24, Gateway 10.0.2.254
- C. Route to 10.0.20.0, Gateway 10.0.2.254
- D. Route to 10.0.10.0/24, Gateway 10.0.10.1

Correct Answer: B

We must add a trusted static route to the 10.0.20.0/24 network through the 10.0.2.254 gateway.

[ESSENTIALS PDF Dumps](#)

[ESSENTIALS Study Guide](#)

[ESSENTIALS Braindumps](#)