

100% Money Back Guarantee

Vendor: IBM

Exam Code: A4040-129

Exam Name: Assessment: IBM i 7.1 Administration

Version: Demo

QUESTION 1

A batch job runs daily in the QBATCH subsystem with a run priority of 50. The job normally takes an hour to complete and no other batch jobs run during this time.

The administrator needs to reduce the run time and requests the run priority be lowered to 40. However, after the change, run time does not decrease.

What is the likely reason that the run time did not decrease?

- A. The run priority applies to only interactive jobs.
- B. D82 Symmetric Multiprocessing has not been installed.
- C. The run priority represents only the relative importance of the job.
- D. The system value QPFRADJ (Performance Adjustment) is set to "No adjustment."

Correct Answer: C

QUESTION 2

Which graphical tool will help identify additional details about activity on the system, to isolate the root cause of performance problems?

- A. PEX
- B. iDoctor
- C. Performance Monitor
- D. Communications Trace

Correct Answer: B

QUESTION 3

The threshold limit has been reached for the system ASP on a system running IBM i 7.1. There are some disk units configured to a user ASP available. Business continuing policy prevents the administrator from stopping the system.

How could the system administrator correct the storage problem in the system ASP?

- A. Increase the ASP threshold above the currently utilized storage.
- B. Concurrently remove available disk units from user ASP using the "Remove units from configuration" SST option and add them to system ASP.
- C. Switch to the backup system using an HA solution and restart the original system to DST. Remove the available disk units from user ASP and add them to system ASP.
- D. Initiate a control panel function 21 to activate DST on the system console for the affected partition. Use the DST feature to compress the parity stripe to increase available storage.

Correct Answer: B

QUESTION 4

An administrator needs to restore a physical file DATALIB/SMALLFILE from a Save 21 backup of library DATALIB. DATALIB has several hundred large database files plus other objects.

The administrator has the job log and output from the last full save of DATALIB. What should the administrator do to restore SMALLFILE in the shortest time?

- A. Run the RST command for object "/QSYS.LIB/DATALIB.LIB/SMALLFILE.FILE"
- B. Delete SMALLFILE, run RSTLIB specifying *NEW objects, and specify library DATALIB as the starting library.
- C. Run RSTLIB for library DATALIB specifying the position parameter for SMALLFILE in library DATALIB from the output of the save.
- D. Run RSTOBJ for DATALIB/SMALLFILE specifying the position and sequence number for SMALLFILE

in library DATALIB from the output of the save.

Correct Answer: D

QUESTION 5

What are the key benefits provided by database journaling?

- A. Can send updates concurrently to a second system Can back out incomplete transactions Can reduce system I/O workload
- B. Can reduce application complexity Can back out incomplete transactions Can maintain database integrity in the case of an unexpected outage
- C. Can send updates concurrently to a second system Can increase performance Can maintain database integrity in the case of an unexpected outage
- D. Can send updates concurrently to a second system Can back out incomplete transactions and commitment control Can maintain database integrity in the case of an unexpected outage

Correct Answer: D

QUESTION 6

Journaling of a large library is running on SYSTEMA and the journal is system managed. Remote journaling to

SYSTEMB has been configured. Due to a communications problem between SYSTEMA and SYSTEMB, remote journaling is not working and cannot be quickly restarted.

Disk utilization on SYSTEMA is increasing rapidly. To reduce disk utilization the administrator tries to delete journal receivers on SYSTEMA. Attempts fail and the following message displays:

CPF705F: Receiver not replicated to 1 remote journals.

What must the administrator do to delete journal receivers on SYSTEMA?

- A. Delete and recreate only the journal, and then delete the receivers.
- B. Stop journaling, as this must be ended first, and then delete the receivers.
- C. Use the DLTJRNRCV command and change the delete option parameter to ignore target receivers.
- D. Use the CHGJRN command to change the Manage Receivers parameter to allow user management of journal receivers and then delete the receivers.

Correct Answer: C

QUESTION 7

Due to an application problem, management has requested the IPL of a partition running IBM i 7.1. The administrator initiates the IPL, and during the restart phase notices the IPL is running in manual mode even though the HMC partition settings indicate B NORMAL.

Why is the IPL running in manual mode?

- A. The PWRDWNSYS command restart parameter is set to *MANUAL.
- B. Manual is the default IPL mode when there is a console problem.
- C. The QIPLTYPE system value is set to "Attended IPL, Console in debug mode".
- D. Manual is the default IPL mode when the previous system end indicator is abnormal.

Correct Answer: C

QUESTION 8

An administrator has been asked to update an IBM i 7.1 system to the most current Technology Refresh available from IBM. Which method is the most appropriate to achieve the update?

- A. Perform a D-mode IPL using the Technology Group PTF package SF99707.

- B. Perform a slip install using the most current 1_Base_01 resave media available.
- C. Perform a scratch install using the most current 1_Base_01 resave media available.
- D. Perform an install of the Technology Group PTF package SF99707 using the GO PTF menu.

Correct Answer: D

QUESTION 9

A company has just purchased a new POWER7 server running IBM i 7.1 to replace an older system running V5R4M5. Due to a mistake by a programmer on the V5R4 system, data was accidentally deleted. To recover, the administrator backs up the deleted data to virtual tape on the 7.1 server and attempts to restore it on the V5R4 server. The restore on the V5R4 server fails with a message stating the data was saved from a more recent release of the operating system.

Which option will solve this problem?

- A. Save the data to physical media.
- B. Set the target release parameter to V5R4M0 when saving the data.
- C. ETP the virtual tape image catalog from the 7.1 server using binary mode.
- D. Use the target release parameter *RECOVER and the access path parameter set to VSR4MO.

Correct Answer: B

QUESTION 10

A disaster recovery test is being performed, using backups from a production system. The backup process is as follows:

Full system save, using GO SAVE Option 21, for weekly backup SAVCHGOBJ LIB(*ALL) is used for daily library backup, in addition to DLO and IFS saves The disaster recovery test is at the point where libraries are ready to be restored

Which pair of actions will restore the libraries to the most recent save point, in the minimum amount of time?

- A. Use RSTLIB(*NONSYS) to restore all libraries and object from the SAVE 21 weekly save. For each daily tape, run a RSTLIB for each library saved by SAVCHGOBJ.
- B. Use RSTLIB(*NONSYS) to restore all libraries and object from the SAVE 21 weekly save. Then run a RSTOBJ for each library saved by SAVCHGOBJ on the most recent daily tape.
- C. Run RSTOBJ for each library saved by SAVCHGOBJ on the most recent daily tape. Then run RSTLIB(*NONSYS) OPTION(*NEW) to restore the remaining libraries and objects from the SAVE 21 weekly save.
- D. For each daily tape, run RSTOBJ for each library saved by SAVCHGOBJ on the daily tapes. Then run RSTOBJ(*NONSYS) OPTION(*NEW) to restore the remaining libraries and objects from the SAVE 21 weekly save.

Correct Answer: B

QUESTION 11

An administrator maintains four image catalogs on a host partition that are used by network-based virtual optical drives. Periodically, images are added or removed from the catalog and it must be re-exported.

What is the simplest method to update the share and NES export?

- A. Create a CL program.
- B. Create a REXX program.
- C. Create a Qshell script.
- D. Run the statements manually as needed.

Correct Answer: B

QUESTION 12

Which statement describes server firmware delivery that uses PTF5 on a POWER7 system?

- A. A single IBM i (57703S1) PTF is ordered to update server firmware.
- B. The firmware is ordered using the marker PTF ID, such as MHxxxxx, and is installed with normal IBM i PTE commands.
- C. The server firmware PTE (MFxxxxx) is ordered from the connected HMC and is sent to the service partition for install.
- D. The HIPER PTF group is ordered for the Licensed Internal Code (5770999) and the order is flagged with Include Firmware Update *YES.

Correct Answer: A

QUESTION 13

A Power 720 currently has its firmware update policy set to Os Managed. Which statement is correct?

- A. Server firmware updates will always be disruptive.
- B. IPLing from the A side of any partition will activate the new server firmware.
- C. Only the Service partition needs PTEs to be installed for the new server firmware to be immediately activated.
- D. Only the Managing partition needs PTF5 to be installed for the new server firmware to be temporarily activated.

Correct Answer: B

QUESTION 14

A customer is upgrading an HMC to a new release using Recovery DVD5 for the new release level. Which action must be completed before performing the upgrade from DVD process?

- A. Run the `HMC Management> Back Up HMC Data' to DVD.
- B. Run the `HMC Management> Save Upgrade Data' to HMC disk.
- C. Run the `HMC Management> Back Up HMC Data' to NFS server.
- D. Run the `HMC Management> Save Upgrade Data' to the administrator's PC.

Correct Answer: B

QUESTION 15

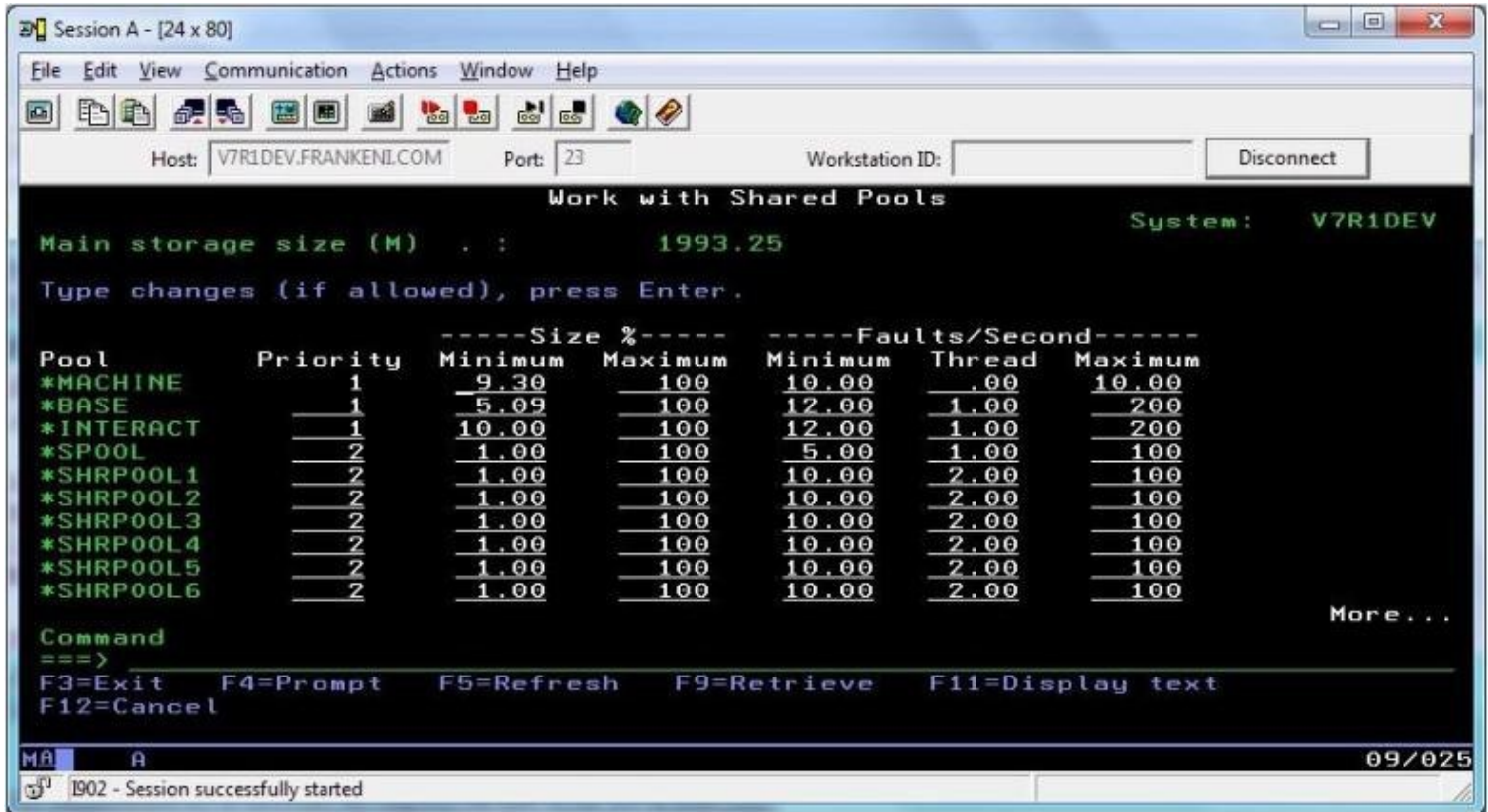
Several IBM i partitions at a customer site provide outdated contact information to IBM when problems are reported. Which command should be used to correct the contact information?

- A. CHGSVCCFG
- B. CHGCNTINF
- C. SNDSRVRQS *UPD
- D. WRKCNTINE, option 2

Correct Answer: D

QUESTION 16

In the Work With Shared Pools panel shown, what is the meaning of the "Minimum" column under the "Size" section?



- A. The minimum amount of main storage that can be assigned to the pool in GB
- B. The minimum percentage of the total main storage that can be assigned to the pool
- C. The minimum amount of main storage that the automatic tuner will assign to the pool in GB
- D. The minimum percentage of the total main storage that the automatic tuner will assign to the pool

Correct Answer: D

QUESTION 17

An administrator wants to ensure a job on the scheduler is ignored if the system is in a restricted state at the time it is scheduled to run. What change will make this occur?

- A. Change the recovery action of the job schedule entry to *NOSBM.
- B. Change the user profile on the job schedule entry to QRECOVERY.
- C. Change the frequency option of the job schedule entry to *ACTIVE.
- D. Use the option on the WRKJQBSCDE screen for "hold when restricted."

Correct Answer: A

QUESTION 18

A company has acquired a new system to handle data warehousing workload, but its IP address has not yet been added to the DNS server. The administrator added an IP address for this system into host table entry of the local system.

When attempting to connect using the host name, the connection fails. Using the IP address to connect works normally.

What will resolve this issue?

- A. Add the gateway IP address to the local host table.
- B. Set the name resolution to *LOCAL on the TCP/IP Domain screen.

- C. Set the name resolution to *RMTONLY on the TCP/IP Domain screen.
- D. Specify the fully qualified name of the remote system when attempting to communicate with it.

Correct Answer: B

QUESTION 19

An administrator needs to determine the level of firmware running on an IBM i 7.1 system. How is this done?

- A. Using the DSPFMWSTS command. The firmware levels on the system are presented in the resulting display.
- B. In DST/SST start the Hardware Service Manager. Use P16 to print the hardware configuration. The active firmware level is provided in the report heading.
- C. In DST/SST start the Hardware Service Manager. Select "Packaging Hardware Resources" option. The firmware level is displayed in the heading of the resulting panel.
- D. In Operations Navigator, right-click on the system and select "Properties." On the resulting panel, click the "Service" tab. The firmware level is on the resulting panel.

Correct Answer: A

QUESTION 20

An administrator has been asked to install the following PTF packages from DVD.

SF99710 Cumulative PTF Package
SF99627 Electronic Service Agent Group
SF99707 Technology Refresh
SF99708 Group Security
SF99709 Group HIPER

Using Option 8 (Install Program Temporary Fix Package) on the GO PTF menu, how can the administrator install all of the above PTFs in the shortest possible time?

- A. Install all packages as a multiple volume PTF set.
- B. Install SF99710 Cumulative PTF Package as it contains all of the other PTFs.
- C. Load and permanently apply the cumulative package followed by each of the group PTFs.
- D. Install the Technology Refresh first, IPL, then install the remaining packages as a group.

Correct Answer: A

QUESTION 21

Which special authorities are required to allow a user to change user profiles on a system with QSECURITY set to 40?

- A. *ALLOBJ*OBJMGT
- B. *SECADM*ALLOBJ
- C. *SECADM*OBJMGT
- D. *SECADM*SER VICE

Correct Answer: B

QUESTION 22

An application vendor has shipped a save file with the source member for a new program. The administrator restored the new source member into the existing source file, but when checking the source file after the restore discovered that all of the previous source members were missing.

Which parameter of the Restore Object (RSTOBJ) command would have allowed the administrator to restore the new member without losing the existing members?

- A. MBROPT *NEW
- B. FRCOBJCVN *NO

- C. ALWOBJDIE *FILEVL
- D. FILEMBR (*NAME *NEW)

Correct Answer: A

QUESTION 23

Which command will help an administrator to find the IBM i Navigator jobs?

- A. WRKJOB TYPE(*PJ)
- B. WRKJOB JOB(QZRCSRVS)
- C. WPKACTJOB JOB(*REMOTE)
- D. WRKUSRJOB USER(*CENTRAL)

Correct Answer: B

QUESTION 24

After an abnormal IPL, jobs that are accessing some files for the first time are spending an extended amount of time in a status of "IDX" and are taking longer to complete.

Which command should be used to enable all pending access path rebuilds to be analyzed, prioritized, and immediately executed rather than waiting for first access?

- A. WRKEFD
- B. EDTRBDAP
- C. WRKAPSTS
- D. WRKJOBAP

Correct Answer: B

QUESTION 25

Consider the following graphic. Where in System i Navigator Management Central are the message monitors configured?

- A. Message
- B. Commands
- C. Extreme Support
- D. Collection Services

Correct Answer: A

QUESTION 26

After installing IBM i 7.1 on a brand new system, only the QSECOFR user profile can login on the system console. The administrator copied the QSECOFR profile into a new user profile. When attempting to login with the new user profile, the following error is displayed:

"CPF1110 not authorized to work station."

What is causing the error?

- A. The DST Console type was not set during installation of the Os.
- B. The QLMT5ECOFR system value is set to require explicit device access.
- C. The limit device session parameter (LMTDEV55N) on the new user profile is set to tYE5.
- D. The system does not allow automatic workstation device creation for users with *ALLOBJ authority.

Correct Answer: B

QUESTION 27

An administrator issues the WRKSYSACT command on a system partition using dedicated processors and the following result displays:

Current processing capacity 2

What does the current processing capacity value indicate?

- A. The percentage of CPU currently available for system jobs.
- B. The share of the physical processors in the pool it is running.
- C. The number of processing units currently assigned to the partition.
- D. The number of virtual processors that are currently active in the partition.

Correct Answer: C

QUESTION 28

An administrator needs to upgrade their Flexible Service Processor's (FSP) firmware for an HMC managed Power 720. They are currently running AL730_085. The latest corrective service on Fix Central is AL730_112_092.

Which statement is correct regarding the installation of this corrective service package?

- A. Since this is an HMC managed FSP, the installation of the corrective service will be concurrent.
- B. Since the FSP will remain at the same 730 code stream level the installation of the corrective service will be concurrent.
- C. Since the 092 is greater than the currently running 085 fix pack level, the installation of the corrective service will be disruptive.
- D. Since the 112 is greater than the currently running 085 fix pack level, the installation of the corrective service will be disruptive.

Correct Answer: C

QUESTION 29

On an HMC-managed system with several partitions, the QSECOFR password for DST/SST has been disabled for one partition. No other profiles for DST/SST are known. What procedure will reset the password to the shipped value?

- A. Sign on to the partition as QSECOFR, issue the CHGDSTPWD PASSWORD(*DEFAULT) command.
- B. Use the function in the HMC for "Users and Groups" to modify the partition's DST password.
- C. Use the control panel function 21 from the HMC user interface to reset the SST/DST password.
- D. Connect to ASMI, use the "admin" profile to reset the DST password of the affected partition.

Correct Answer: A

QUESTION 30

Which command will save the access paths for two physical files (PFLE1, PFILE2) when both the physical and dependent logical file (LFILE) reside in the same library?

- A. SAV OBJ(LFILE) PATH(*YES)
- B. SAVOBJ OBJ(LFILE) ACCPTH(*YES)
- C. SAVOBJ OBJ(PFILE1 PFILE2) ACCPTH(*YES)
- D. SAVACCPATH FILE(PFILE1 PFILE2) ACCPATH(*YES)

Correct Answer: C

QUESTION 31

An administrator needs to upgrade users' IBM i Access for Windows emulators to use Secure Sockets Layer (SSL) protocol. The administrator used the Microsoft Windows administrator account to complete a successful upgrade and subsequent test. After re-booting the Windows PC, users log in using their ID. When users launch the IBM i Access emulator and log into the IBM i server, the emulator session is not SSL secured, even after the successful installation.

To Read the [Whole Q&As](#), please purchase the [Complete Version](#) from [Our website](#).

Trying our product !

- ★ **100%** Guaranteed Success
- ★ **100%** Money Back Guarantee
- ★ **365 Days** Free Update
- ★ **Instant Download** After Purchase
- ★ **24x7** Customer Support
- ★ Average **99.9%** Success Rate
- ★ More than **69,000** Satisfied Customers Worldwide
- ★ Multi-Platform capabilities - **Windows, Mac, Android, iPhone, iPod, iPad, Kindle**

Need Help

Please provide as much detail as possible so we can best assist you.

To update a previously submitted ticket:



 One Year Free Update <p>Free update is available within One Year after your purchase. After One Year, you will get 50% discounts for updating. And we are proud to boast a 24/7 efficient Customer Support system via Email.</p>	 Money Back Guarantee <p>To ensure that you are spending on quality products, we provide 100% money back guarantee for 30 days from the date of purchase.</p>	 Security & Privacy <p>We respect customer privacy. We use McAfee's security service to provide you with utmost security for your personal information & peace of mind.</p>
---	---	--

Guarantee & Policy | Privacy & Policy | Terms & Conditions

Any charges made through this site will appear as Global Simulators Limited.

All trademarks are the property of their respective owners.