



# OMG-OCSMP-MBI300<sup>Q&As</sup>

OMG-Certified Systems Modeling Professional - Model Builder –  
Intermediate





**Pass OMG OMG-OCSMP-MBI300 Exam with 100%  
Guarantee**

Free Download Real Questions & Answers **PDF** and **VCE** file from:

<https://www.pass4itsure.com/omg-ocsmp-mbi300.html>

100% Passing Guarantee  
100% Money Back Assurance

Following Questions and Answers are all new published by OMG  
Official Exam Center

-  **Instant Download** After Purchase
-  **100% Money Back** Guarantee
-  **365 Days** Free Update
-  **800,000+** Satisfied Customers





### QUESTION 1

Choose the correct answer

Which statement is true when modeling generalization?

- A. Subclasses may only redefine existing features of a superclass.
- B. Subclasses may add, remove, and redefine existing features of a superclass
- C. Subclasses may add and remove, but not redefine, existing features of a superclass
- D. Subclasses may add and redefine, but not remove existing features of a superclass
- E. Subclasses may remove or redefine existing features, but not add features, to a superclass.

Correct Answer: D

---

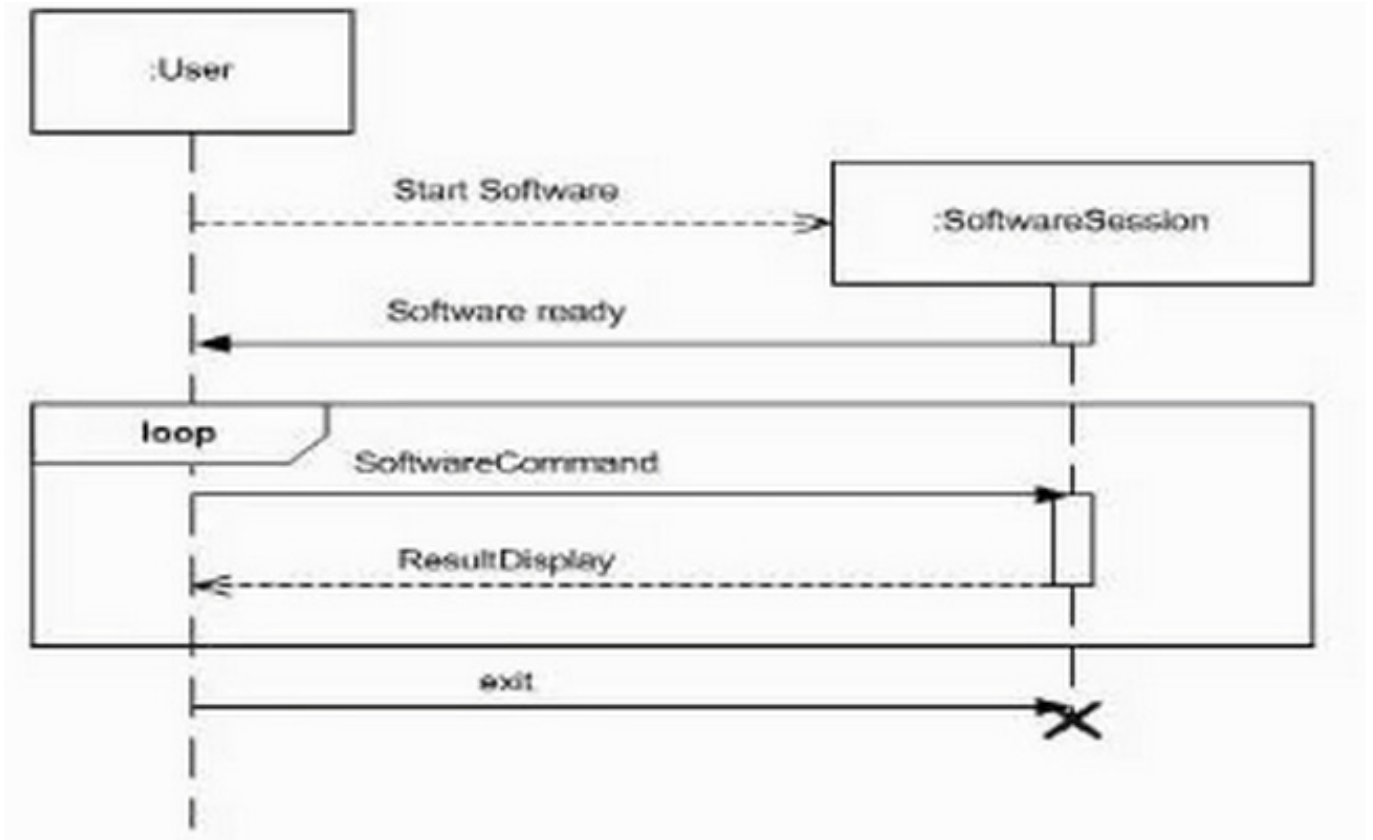
### QUESTION 2

HOTSPOT

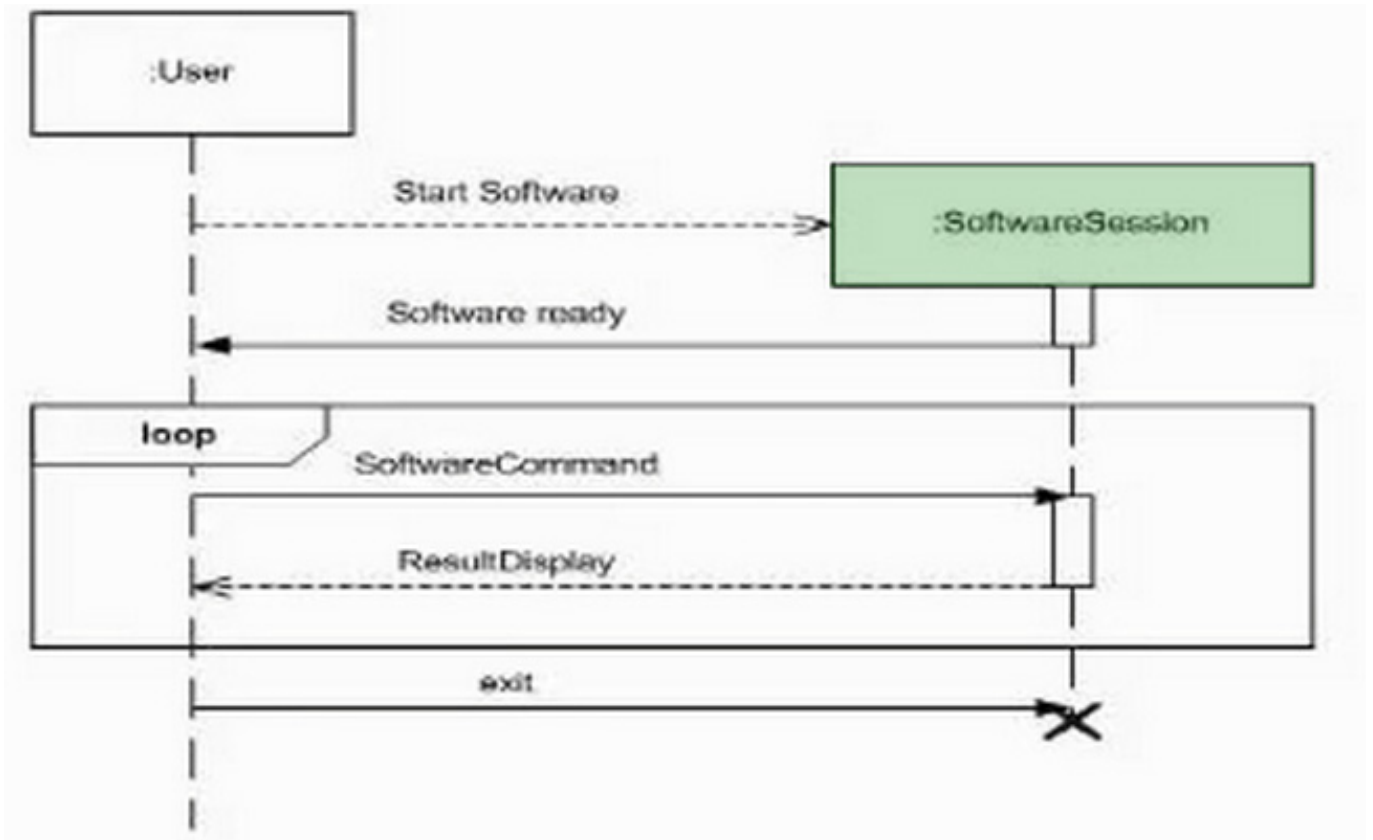
Choose the correct answer.

A project has produced the following initial draft sequence diagram fragment:

Hot Area:



Correct Answer:

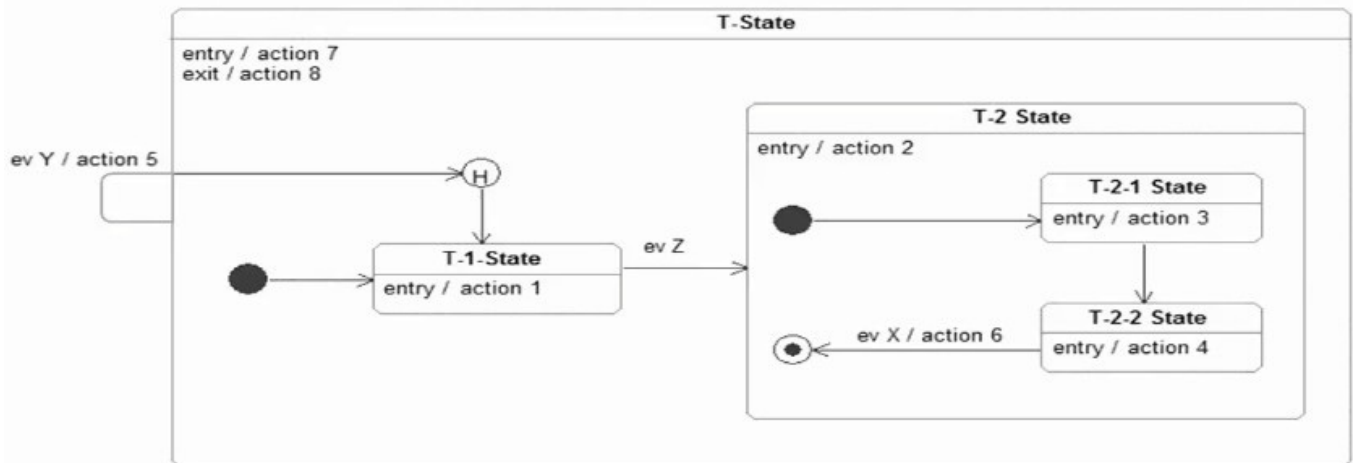




### QUESTION 3

Choose the correct answer.

Assume the following state machine is In the T-1 State when ev Z occurs:



Subsequently ev V occurs.

Which sequence of actions will be executed?

- A. action 2
- B. action 2 action 3
- C. action 2 action 4
- D. action 3
- E. action 4
- F. action 5 action 2 action 3
- G. action 5 action 2 action 4
- H. action 5 action 1 action 2 action 3
- I. action 5 action 1 action 2 action 4
- J. action 8 action 5 action 7 action 2 action 3
- K. action 8 action 5 action 7 action 2 action 3 action 4
- L. action 8 action 5 action 7 action 2 action 4

Correct Answer: I



#### QUESTION 4

Choose the correct answer The following are behavioral requirements for an automobile electric window

(1)

When the window button is moved into the up position and the window is not fully up the window shall begin to move up

(2)

When the window button is moved into the down position and the window is not fully down, the window shall begin to move down

(3)

When the window button is released or the window reaches the fully up or fully down position, the window shall stop moving

(4)

Requirements (1-3) apply when the ignition is on. However, turning the ignition off shall take effect only after the window has stopped moving. Which state machine diagram fragment describes the required behavior?

A.

Option A

B.

Option B

C.

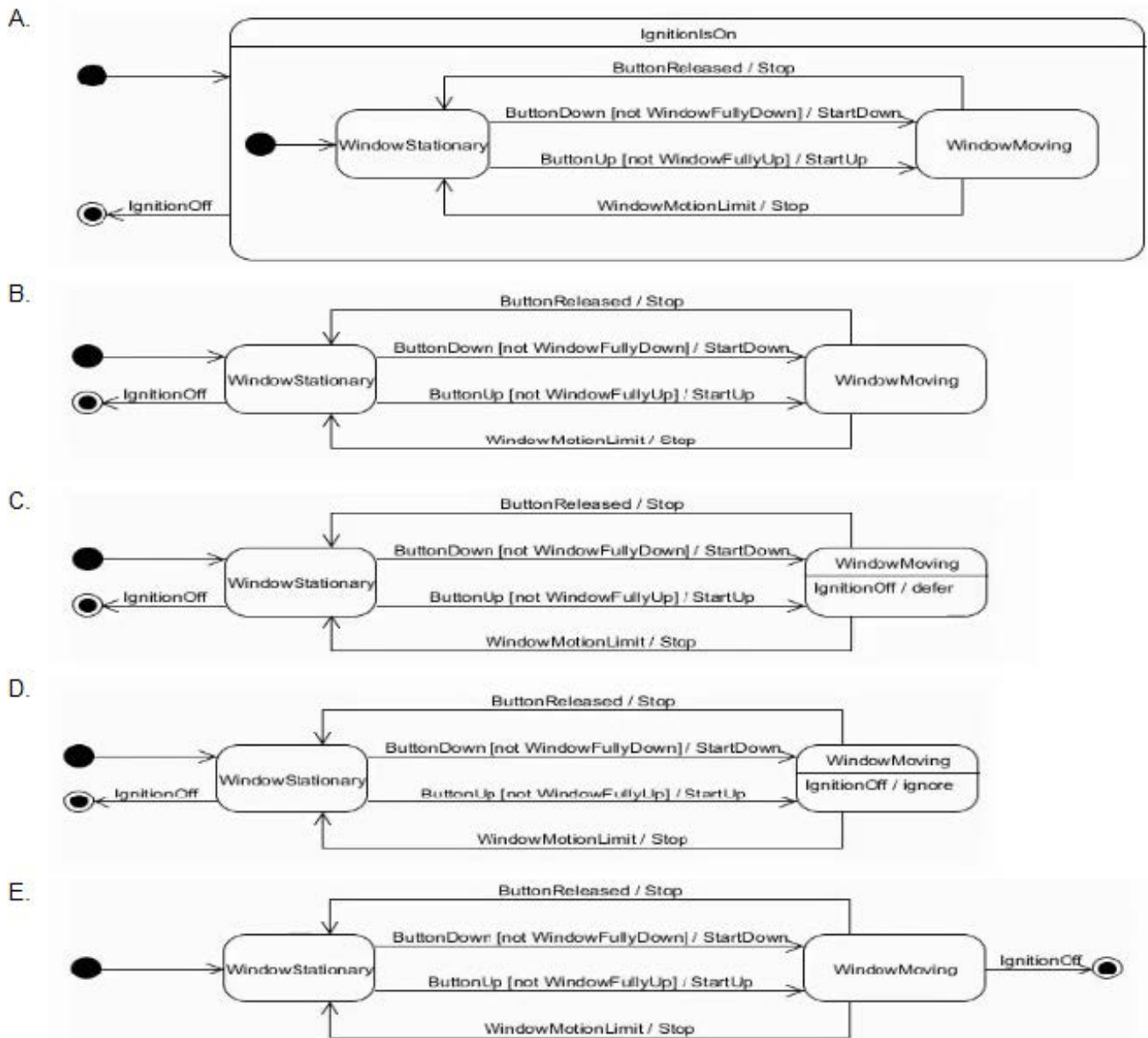
Option C

D.

Option D

E.

Option E



Correct Answer: A

### QUESTION 5

Choose the correct answer

What is a best practice to define the package structure for a SysML model?

- A. SysML defines the package structure
- B. The modeling tool creates the package structure
- C. The modeling methodology defines the package structure.



D. Each modeler can create packages for that engineer's specific purpose

Correct Answer: C

[OMG-OCSMP-MBI300 PDF Dumps](#)

[OMG-OCSMP-MBI300 Study Guide](#)

[OMG-OCSMP-MBI300 Exam Questions](#)