



NSE7_EFW-7.2^{Q&As}

Fortinet NSE 7 - Enterprise Firewall 7.2

Pass Fortinet NSE7_EFW-7.2 Exam with 100% Guarantee

Free Download Real Questions & Answers **PDF** and **VCE** file from:

https://www.pass4itsure.com/nse7_efw-7-2.html

100% Passing Guarantee
100% Money Back Assurance

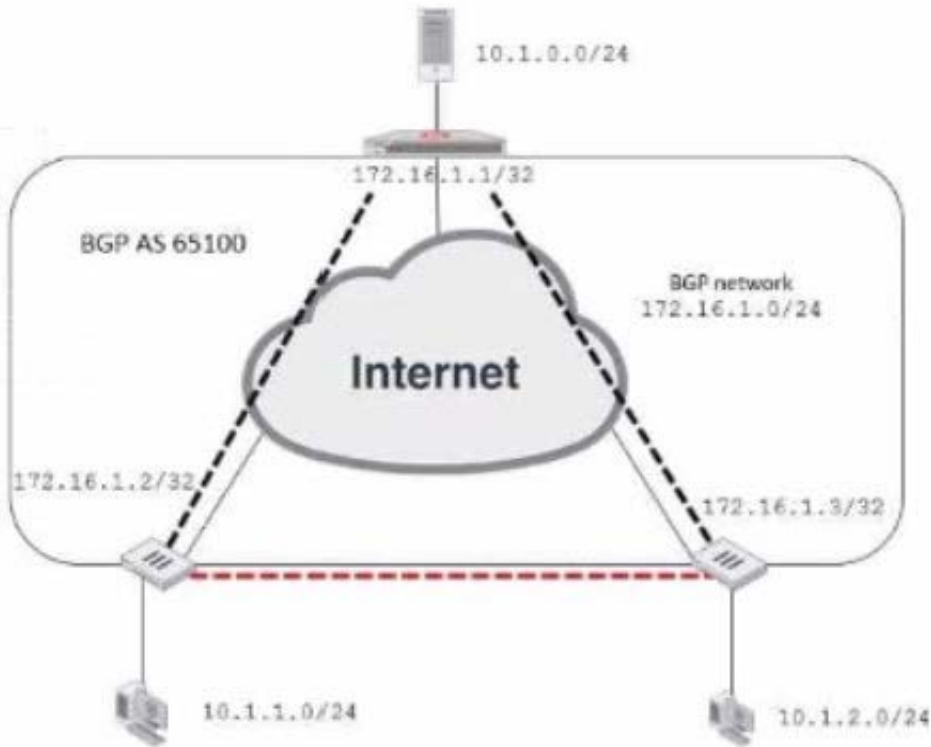
Following Questions and Answers are all new published by Fortinet
Official Exam Center

-  **Instant Download** After Purchase
-  **100% Money Back** Guarantee
-  **365 Days** Free Update
-  **800,000+** Satisfied Customers



**QUESTION 1**

Exhibit.

Network diagram**Partial BGP configuration**

```
Hub # show router bgp
config router bgp
  set as 65100
  set router-id 172.16.1.1
  config neighbor-group
    edit "advpn"
      set remote-as 65100
      ...
    next
  end
  ...
end
```

Refer to the exhibit, which contains an ADVPN network diagram and a partial BGP configuration. Which two parameters should you configure in config neighbor range? (Choose two.)



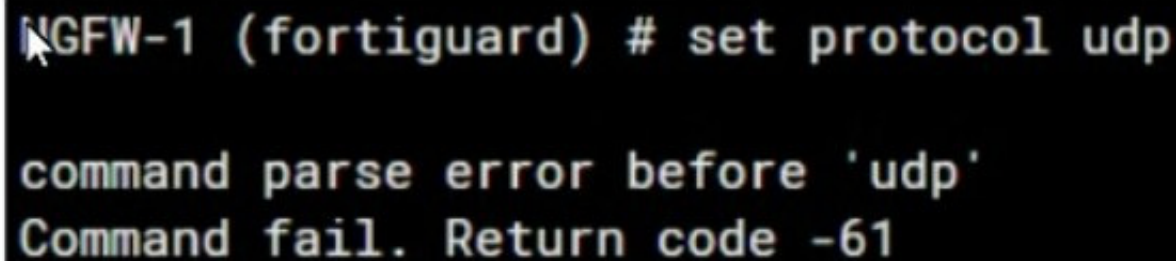
- A. set prefix 172.16.1.0 255.255.255.0
- B. set route reflector-client enable
- C. set neighbor-group advpn
- D. set prefix 10.1.0 255.255.255.0

Correct Answer: AC

In the ADVPN configuration for BGP, you should specify the prefix that the neighbors can advertise. Option A is correct as you would configure the BGP network prefix that should be advertised to the neighbors, which matches the BGP network in the diagram. Option C is also correct since you should reference the neighbor group configured for the ADVPN setup within the BGP configuration.

QUESTION 2

Refer to the exhibit, which shows an error in system fortiguard configuration.



```
NGFW-1 (fortiguard) # set protocol udp
command parse error before 'udp'
Command fail. Return code -61
```

What is the reason you cannot set the protocol to udp in config system fortiguard?

- A. FortiManager provides FortiGuard.
- B. fortiguard-anycast is set to enable.
- C. You do not have the corresponding write access.
- D. udp is not a protocol option.

Correct Answer: D

The reason for the command failure when trying to set the protocol to UDP in the config system fortiguard is likely that UDP is not a protocol option in this context. The command syntax might be incorrect or the option to set a protocol for FortiGuard updates might not exist in this manner. So the correct answer is D. udp is not a protocol option.

QUESTION 3

You want to improve reliability over a lossy IPSec tunnel.

Which combination of IPSec phase 1 parameters should you configure?



- A. fec-ingress and fec-egress
- B. Odpd and dpd-retryinterval
- C. fragmentation and fragmentation-mtu
- D. keepalive and keylive

Correct Answer: C

For improving reliability over a lossy IPsec tunnel, the fragmentation and fragmentation-mtu parameters should be configured. In scenarios where there might be issues with packet size or an unreliable network, setting the IPsec phase 1 to allow for fragmentation will enable large packets to be broken down, preventing them from being dropped due to size or poor network quality. The fragmentation-mtu specifies the size of the fragments. This is aligned with Fortinet's recommendations for handling IPsec VPN over networks with potential packet loss or size limitations.

QUESTION 4

Which, three conditions are required for two FortiGate devices to form an OSPF adjacency? (Choose three.)

- A. OSPF interface network types match
- B. OSPF router IDs are unique
- C. OSPF interface priority settings are unique
- D. OSPF link costs match
- E. Authentication settings match

Correct Answer: ABE

Option A is correct because the OSPF interface network types determine how the routers form adjacencies and exchange LSAs on a network segment. The network types must match for the routers to become neighbors¹. Option B is correct because the OSPF router IDs are used to identify each router in the OSPF domain and to establish adjacencies. The router IDs must be unique for the routers to become neighbors². Option E is correct because the authentication settings control how the routers authenticate each other before exchanging OSPF packets. The authentication settings must match for the routers to become neighbors³. Option C is incorrect because the OSPF interface priority settings are used to elect the designated router (DR) and the backup designated router (BDR) on a broadcast or non-broadcast multi-access network. The priority settings do not have to be unique for the routers to become neighbors, but they affect the DR/BDR election process⁴. Option D is incorrect because the OSPF link costs are used to calculate the shortest path to a destination network based on the bandwidth of the links. The link costs do not have to match for the routers to become neighbors, but they affect the routing decisions⁵. References: =

1: OSPF network types

2: OSPF router ID

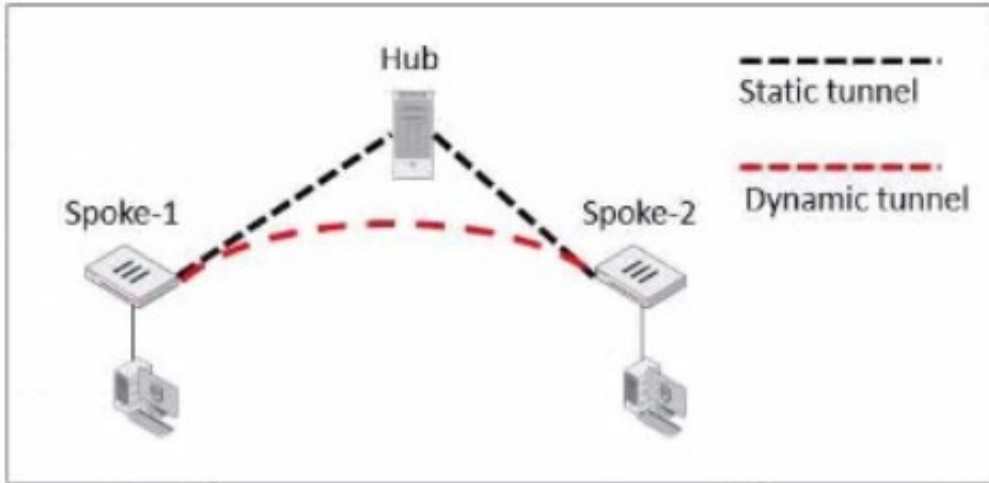
3: OSPF authentication

4: OSPF interface priority

5: OSPF link cost

**QUESTION 5**

Exhibit.



Refer to the exhibit, which shows an ADVPN network.

The client behind Spoke-1 generates traffic to the device located behind Spoke-2.

Which first message does the hub send to Spoke-1 to bring up the dynamic tunnel?

- A. Shortcut query
- B. Shortcut reply
- C. Shortcut offer
- D. Shortcut forward

Correct Answer: A

In an ADVPN scenario, when traffic is initiated from a client behind one spoke to another spoke, the hub sends a shortcut query to the initiating spoke. This query is used to determine if there is a more direct path for the traffic, which can then trigger the establishment of a dynamic tunnel between the spokes.

[NSE7_EFW-7.2 VCE Dumps](#)

[NSE7_EFW-7.2 Study Guide](#)

[NSE7_EFW-7.2 Exam Questions](#)