



NCP-US^{Q&As}

Nutanix Certified Professional – Unified Storage (NCP-US) v6 exam

Pass Nutanix NCP-US Exam with 100% Guarantee

Free Download Real Questions & Answers **PDF** and **VCE** file from:

<https://www.pass4itsure.com/ncp-us.html>

100% Passing Guarantee
100% Money Back Assurance

Following Questions and Answers are all new published by Nutanix
Official Exam Center

-  **Instant Download** After Purchase
-  **100% Money Back** Guarantee
-  **365 Days** Free Update
-  **800,000+** Satisfied Customers





QUESTION 1

Which tool allows a report on file sizes to be automatically generated on a weekly basis?

- A. Data Lens
- B. Files view in Prism Central
- C. Files Console via Prism Element
- D. File Analytics

Correct Answer: A

Explanation: Data Lens is a feature that provides insights into the data stored in Files, such as file types, sizes, owners, permissions, and access patterns. Data Lens allows administrators to create reports on various aspects of their data and schedule them to run automatically on a weekly basis. References: Nutanix Data Lens Administration Guide

QUESTION 2

An administrator has received an alert AI60068 - ADSDuplicateIPDetected details of alert as follows:

```
Block Serial Number: 16SMXXXXXXXXX
alert_time: Thu Jan 19 2023 23:14:10 GMT-0800 (PST)
alert_type: AFSDuplicateIPDetected
alert_msg: AI60068: Duplicate IP address detected for a file server VMs for (file_server_name). Error Message: (message)
cluster_id: xxxxx
alert_body: No Alert Body Available
```

Which error log should the administrator review to determine the related Duplicate IP address involved?

- A. Tcpkill.log
- B. Minerva_cvm.log
- C. Solver.log
- D. Minerva.nvm.log

Correct Answer: B

Explanation: The Minerva_cvm.log file contains information about the Minerva service, which is responsible for managing the FSVMs and their communication with Prism Central. The Minerva_cvm.log file can be used to troubleshoot issues related to Nutanix Files, such as duplicate IP address detection. The log file can be found in /home/nutanix/data/logs/minerva on any CVM in the cluster. References: Nutanix Support Portal - Troubleshooting Nutanix Files

QUESTION 3



What are two network requirements for a four-node FSVM deployment? (Choose two.)

- A. Four available IP addresses on the Storage network
- B. Five available IP addresses on the Client network
- C. Five available IP addresses on the Storage network
- D. Four available IP addresses on the Client network

Correct Answer: BC

Explanation: The two network requirements for a four-node FSVM deployment are five available IP addresses on the Client network and five available IP addresses on the Storage network. The Client network is used for communication between the FSVMs and the clients, while the Storage network is used for communication between the FSVMs and the CVMs. For each FSVM, one Client IP and one Storage IP are required. Additionally, one extra Client IP is required for the file server VIP (Virtual IP), which is used as a single point of access for all shares and exports on the file server. References: Nutanix Files Administration Guide, page 28; Nutanix Files Solution Guide, page 7

QUESTION 4

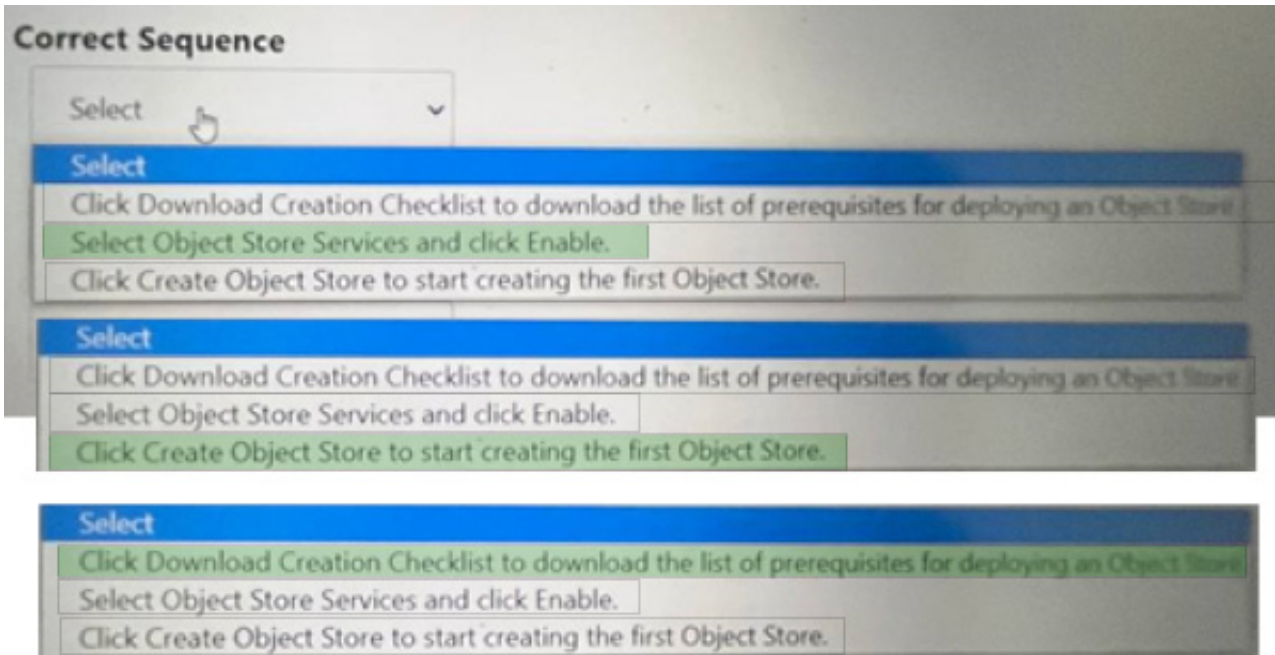
Within the Prism Central Entity > Services > Objects menu option, what is the correct task order for creating an object storage?

Hot Area:

The screenshot displays a 'Correct Sequence' section with a dropdown menu set to 'Select'. Below the dropdown, three identical task sequences are listed, each starting with a blue 'Select' header. The steps in each sequence are:

- Click Download Creation Checklist to download the list of prerequisites for deploying an Object Store.
- Select Object Store Services and click Enable.
- Click Create Object Store to start creating the first Object Store.

Correct Answer:



The correct task order for creating an object store is: Select ObjectStore Service and click Enable Click Create Object Store to start creating the first Object store Click Download Creation Checklist to download the list of prerequisites for deploying an Object store The first step is to enable the ObjectStore Service, which is a service that allows users to create and manage object storage clusters on a Nutanix cluster. The second step is to create an Object store, which is an object storage cluster that provides S3-compatible access to buckets and objects for various applications and users. The third step is to download the Creation Checklist, which is a document that lists the prerequisites and configurations that are required for deploying an Object store, such as cluster details, network details, storage details, etc. The administrator should review and complete the Creation Checklist before proceeding with the deployment of the Object store.

QUESTION 5

An administrator is tasked with deploying a Microsoft Server Failover Cluster for a critical application that uses shared storage.

The failover cluster instance will consist of VMs running on an AHV-hosted cluster and bare metal servers for maximum resiliency.

What should the administrator do to satisfy this requirement?

- A. Create a Bucket with Objects.
- B. Provision a Volume Group with Volume.
- C. Create an SMB Share with Files.
- D. Provision a new Storage Container.

Correct Answer: B

Explanation: Nutanix Volumes allows administrators to provision a volume group with one or more volumes that can be attached to multiple VMs or physical servers via iSCSI. This enables the creation of a Microsoft Server Failover Cluster that uses shared storage for a critical application. The volume group can be attached to VMs running on an AHV-hosted



cluster and bare metal servers for maximum resiliency1. References: Nutanix Volumes Administration Guide1

[Latest NCP-US Dumps](#)

[NCP-US PDF Dumps](#)

[NCP-US Braindumps](#)