



HPE6-A80^{Q&As}

Aruba Certified Design Expert Written

Pass HP HPE6-A80 Exam with 100% Guarantee

Free Download Real Questions & Answers **PDF** and **VCE** file from:

<https://www.pass4itsure.com/hpe6-a80.html>

100% Passing Guarantee
100% Money Back Assurance

Following Questions and Answers are all new published by HP Official Exam Center

-  **Instant Download** After Purchase
-  **100% Money Back** Guarantee
-  **365 Days** Free Update
-  **800,000+** Satisfied Customers





QUESTION 1

Refer to the exhibit.

Line#	Part Number	Description	Manufacturer
1.00	JZ092AAE	Aruba Meridian Blue Dot Nav 1yr E-STU	Hewlett Packard Enter...
1.01	JZ095AAE	Aruba Meridian Campaigns 1yr E-STU	Hewlett Packard Enter...
Quote Total			

A stadium wants to deploy location-based services, including blue-dot wayfinding over a 200,000 square foot (58,000 sq. m) area. The customer has selected a 1 year subscription.

The exhibit shows the BOM that the architect created in iris.

Which correction should the architect make?

- A. Change the campaign subscription to a Maps subscription.
- B. Add two Maps subscriptions.
- C. Add another campaign subscription.
- D. Remove one Blue Dot Nav subscription.

Correct Answer: A

QUESTION 2

A retail customer is doing a wired and a wireless refresh with Aruba CX switches and S02.11ax APs. Currently, they have wireless Point of Sale (PoS) systems and would like to assure that the proposed deployment solution will comply with the Payment Card Industry (PCI) Data Security Standard (DSS) requirements. The architect has proposed the following deployment solutions regarding PCI DSS requirements: -IDS/IPS -Aruba APs in hybrid mode as well as in dedicated AMs mode -Strong authentication and encryption for wireless -Built-in firewall and role-based access controls to segment WLAN Which other requirements must you include in the existing deployment solution? (Select two.)

- A. Select the FIPS/TAA-compliant version for the Access Points.
- B. Suggest MACSet between the Aruba CX switches that encrypt all traffic over the link.
- C. Switch high-availability solution VSF and VSX also can encrypt all traffic on their switch links.
- D. Aruba Central or Aruba AirWave to generate a scheduled compliance reporting.
- E. Role-based access controls for wired users using ClearPass. Optionally ; tunneled-node to MCs.

Correct Answer: DE

**QUESTION 3**

A company already has an Aruba wireless network. The network currently consists of:

*

two 7210 MCs in the network core

*

two 7210 MCs in the DMZ

*

200 AP-515S in Building 1 and Building 5

100 AP-515S each in Building 2, Building 3, and Building 4

The customer now wants to assess if it needs local Mobility controllers (MC) for any buildings:

- Building 1 is the main office building for the campus. It supports the highest number of APs. It connects to the network core without an aggregation layer.

*

Building 2 is further away from the Building 1, and no roaming is provided between it and the other buildings. Its access layer connects to the network core with a pair of Aruba CX 6300M aggregation switches.

*

Building 3 is further away from the other buildings, it connects to the network core without an aggregation layer.

The Guest SSID traffic should be tunneled to the DMZ controllers

Building 4 has its own local datacenter and Internet connection. The company would like it to be able to operate completely autonomously if its aggregation layer loses connectivity with the core.

*

Building 5 is further away from the other buildings, it connects to the network core without an aggregation layer.

This building has been assigned to a partner that would like to manage a dedicated SSID using the shared AP infrastructure.

In which two buildings should the network architect plan local mobility controllers (MCs)? (Select two)

A.

Building 1

B.

Building 4

C.



Building 5

D.

Building 3

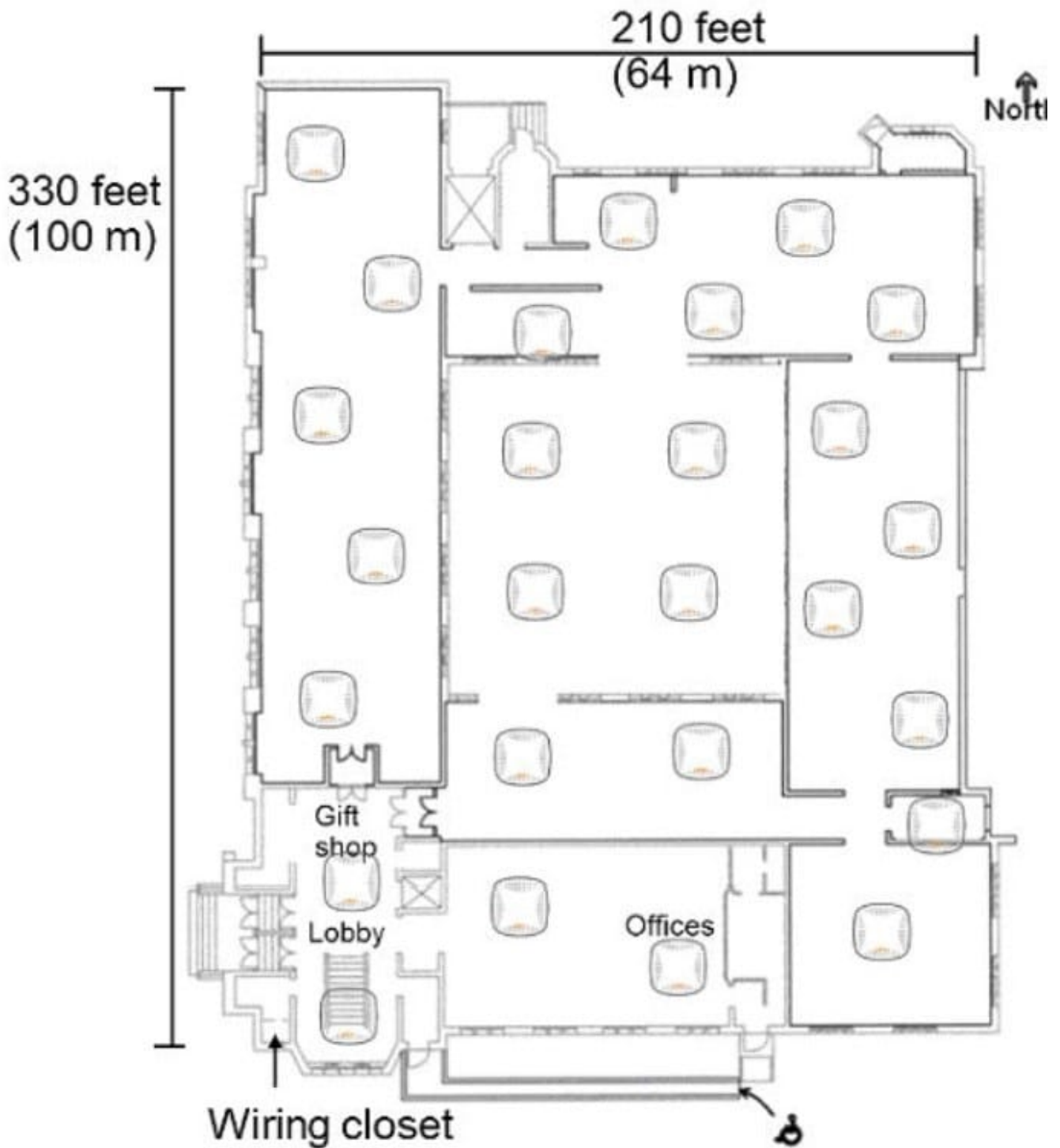
E.

Building 2

Correct Answer: AD

QUESTION 4

Refer to the exhibit.



A museum wants to add full S02.11ax wireless coverage across the building, which is about 210 feet (64 m) by 330 feet (100 m). The museum has 15-foot (4.6 m) ceilings and stone interior walls. The network needs to support up to 600

wireless guest devices

The exhibit also shows a preliminary plan for AP locations, the museum has eight Ethernet drops in the lobby and gift stop, but has otherwise not been wired.

What is one recommendation that the architect should make to ensure a successful deployment?



- A. Add about 10 APs to achieve adequate density
- B. Use directional antennas to avoid lost signal.
- C. Use at least CATS cable to connect to the APs.
- D. Add a wiring closet closer to the north side.

Correct Answer: D

QUESTION 5

A customer needs an AP for an indoor lecture hall that is about 82 feet (25 m) by 32 feet (25 m) and has 300 seats. The ceiling height is 15 feet. The expected take rate is 100 percent.

The network needs to support the student laptops, which all support 802.11ac and some support 802.11ax standard.

The customer would like to obtain as many usable cells as possible with as few APs as possible.

Which of these APs meets the requirements?

- A. AP-335
- B. AP-S15
- C. AP-345
- D. AP-535

Correct Answer: D

[HPE6-A80 Study Guide](#)

[HPE6-A80 Exam Questions](#)

[HPE6-A80 Braindumps](#)