



AZ-302^{Q&As}

Microsoft Azure Solutions Architect Certification Transition

Pass Microsoft AZ-302 Exam with 100% Guarantee

Free Download Real Questions & Answers **PDF** and **VCE** file from:

<https://www.pass4itsure.com/az-302.html>

100% Passing Guarantee
100% Money Back Assurance

Following Questions and Answers are all new published by Microsoft
Official Exam Center

-  **Instant Download** After Purchase
-  **100% Money Back** Guarantee
-  **365 Days** Free Update
-  **800,000+** Satisfied Customers





QUESTION 1

Your network contains an on-premises Active Directory and an Azure Active Directory (Azure AD) tenant.

You deploy Azure AD Connect and configure pass-through authentication? Your Azure subscription contains several web apps that are accessed from the Internet. You plan to enable Azure Multi-Factor Authentication (MFA) for the Azure

tenant. You need to recommend a solution to prevent users from being prompted for Azure MFA when they access the web apps from the on-premises network.

What should you include in the recommendation?

- A. a site-to-site VPN between the on-premises network and Azure
- B. an Azure policy
- C. an Azure ExpressRoute circuit
- D. trusted IPs

Correct Answer: D

QUESTION 2

You are developing an application that consists of an ASP.NET Core Web API website and a WebJob that starts automatically and runs continuously. You are building the deployment process for the application.

You need to ensure that both the website and the WebJob are deployed.

How should you structure the deployment folders? To answer, drag the appropriate path segments to the correct locations. Each path segment may be used once, more than once, or not at all. You may need to drag the split bar between

panes or scroll to view content.

NOTE: Each correct selection is worth one point.

Select and Place:

The screenshot shows an exam question interface. On the left, under the heading 'Folders', there is a list of folder names: 'jobs', 'webjobs', 'autorun', 'app_data', 'bin', and 'continuous'. On the right, under the heading 'Answer Area', there is a diagram for structuring deployment folders. The diagram is divided into two columns: 'Application component' and 'Folder'. Under 'Application component', there are two items: 'Website' and 'WebJob'. Under 'Folder', there are three empty boxes, each labeled 'Folder', separated by slashes. A watermark 'www.Pass4itSure.com' is visible across the diagram.

Correct Answer:



QUESTION 3

You have an Azure subscription named Subscription1 that contains an Azure virtual machine named VM1. VM1 is in a resource group named RG1. VM1 runs services that will be used to deploy resources to RG1. You need to ensure that a

service running on VM1 can manage the resources in RG1 by using the identity of VM1.

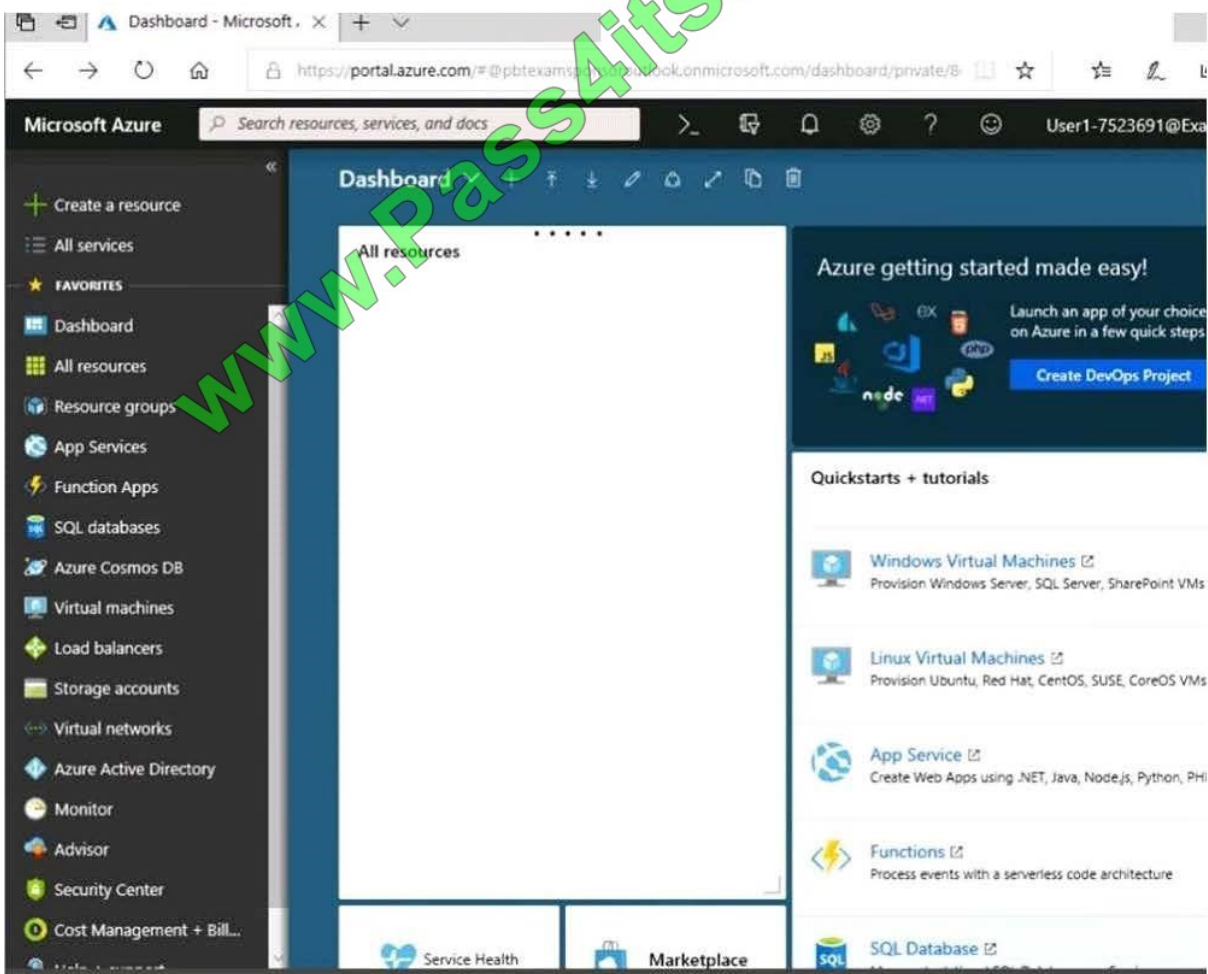
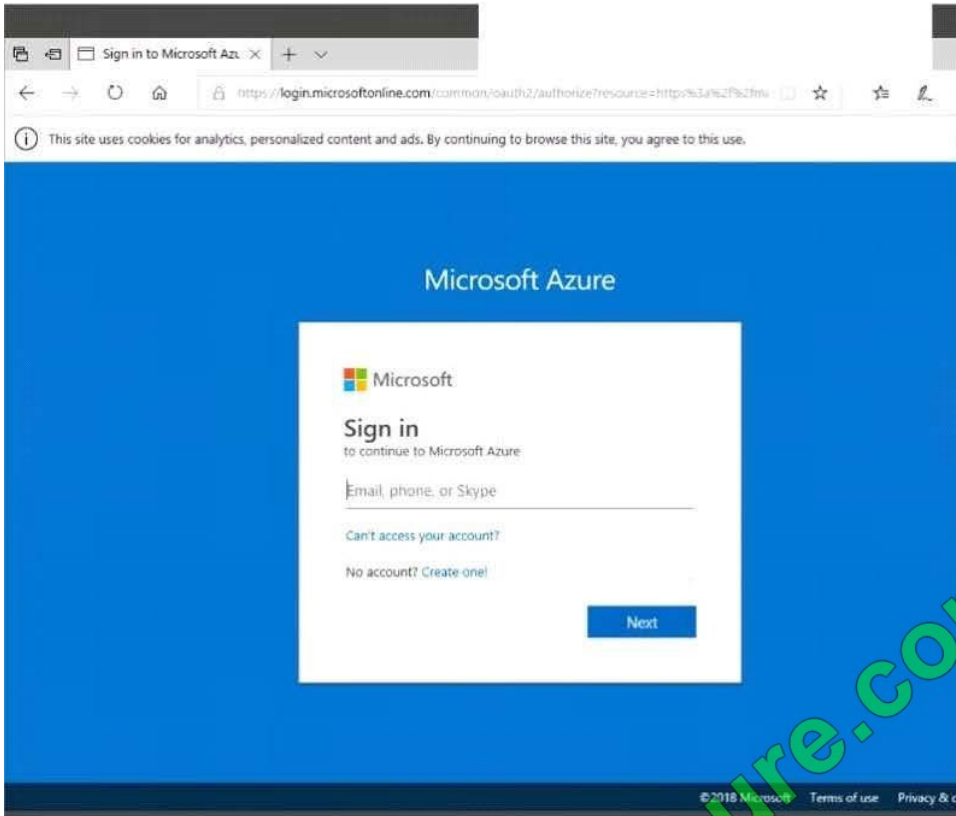
What should you do first?

- A. From the Azure portal, modify the Access control (IAM) settings of RG1.
- B. From the Azure portal, modify the Policies settings of RG1.
- C. From the Azure portal, modify the Access control (IAM) settings of VM1.
- D. From the Azure portal, modify the value of the Managed Service Identity option for VM1.

Correct Answer: D

QUESTION 4

Click to expand each objective. To connect to the Azure portal, type <https://portal.azure.com> in the browser address bar.





Home > Storage accounts > Create storage account

Create storage account

✓ Validation passed

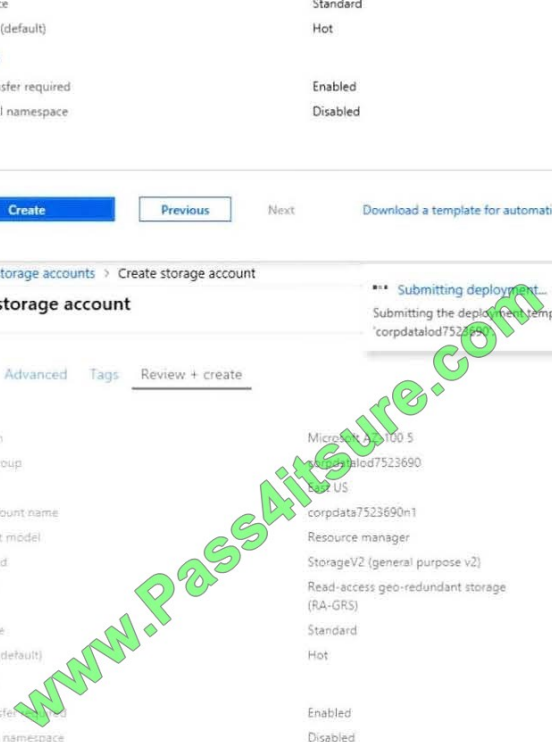
Basics Advanced Tags Review + create

BASICS

Subscription	Microsoft AZ-100 5
Resource group	corpdata7523690
Location	East US
Storage account name	corpdata7523690n1
Deployment model	Resource manager
Account kind	StorageV2 (general purpose v2)
Replication	Read-access geo-redundant storage (RA-GRS)
Performance	Standard
Access tier (default)	Hot

ADVANCED

Secure transfer required	Enabled
Hierarchical namespace	Disabled



Create Previous Next Download a template for automation

Home > Storage accounts > Create storage account

Create storage account

Submitting deployment...
Submitting the deployment template for resource group 'corpdata7523690'.

Basics Advanced Tags Review + create

BASICS

Subscription	Microsoft AZ-100 5
Resource group	corpdata7523690
Location	East US
Storage account name	corpdata7523690n1
Deployment model	Resource manager
Account kind	StorageV2 (general purpose v2)
Replication	Read-access geo-redundant storage (RA-GRS)
Performance	Standard
Access tier (default)	Hot

ADVANCED

Secure transfer required	Enabled
Hierarchical namespace	Disabled

Home > Microsoft.StorageAccount-20181011170335 - Overview

Microsoft.StorageAccount-20181011170335 - Overview

Deployment

Search (Ctrl+F)

Delete Cancel Redeploy Refresh

Overview

Outputs

Inputs

Template

Your deployment is underway

Check the status of your deployment, manage resources, or troubleshoot deployment issues. Pin this page to your dashboard to easily find it next time.



Deployment name: Microsoft.StorageAccount-20181011170335
Subscription: Microsoft AZ-100 5
Resource group: corpdata7523690

DEPLOYMENT DETAILS (Download)

Start time: 10/11/2018 5:04:06 PM
Duration: 17 seconds
Correlation ID: bd0806a4-d1bd-42db-be6b-55e0ec38f49b

RESOURCE	TYPE	STATUS	OPERATI...
----------	------	--------	------------

No results.



[Home](#) > [Virtual machines](#) > Create a virtual machine

Create a virtual machine

! Validation failed. Required information is missing or not valid.

[Basics](#) • [Disks](#) [Networking](#) [Management](#) [Guest config](#) [Tags](#) [Review + create](#)

PRODUCT DETAILS

Ubuntu Server 18.04 LTS

by Canonical

[Terms of use](#) | [Privacy policy](#)

Standard D2s v3

by Microsoft

[Terms of use](#) | [Privacy policy](#)

Pricing not available for this offering

View [Pricing details](#) for more information.

Subscription credits apply ⓘ

0.0960 USD/hr

[Pricing for other VM sizes](#)

TERMS

By clicking "Create", I agree to the legal terms and privacy statement(s) associated with the Marketplace offering(s) listed above; (b) authorize Microsoft to bill my current payment method for the fees associated with the offering(s), with the same billing frequency as my Azure subscription; and (c) agree that Microsoft may share my contact, usage and transactional information with the provider(s) of the offering(s) for support, billing and other transactional activities. Microsoft does not provide rights for third-party offerings. See the [Azure Marketplace Terms](#) for additional details.

When you are finished performing all the tasks, click the `Next` button. Note that you cannot return to the lab once you click the `Next` button. Scoring occurs in the background while you complete the rest of the exam.

Overview

The following section of the exam is a lab. In this section, you will perform a set of tasks in a live environment. While most functionality will be available to you as it would be in a live environment, some functionality (e.g., copy and paste, ability

to navigate to external websites) will not be possible by design.

Scoring is based on the outcome of performing the tasks stated in the lab. In other words, it doesn't matter how you accomplish the task, if you successfully perform it, you will earn credit for that task. Labs are not timed separately, and this

exam may have more than one lab that you must complete. You can use as much time as you would like to complete each lab. But, you should manage your time appropriately to ensure that you are able to complete the lab(s) and all other

sections of the exam in the time provided.

Please note that once you submit your work by clicking the Next button within a lab, you will NOT be able to return to



the lab.

To start the lab

You may start the lab by clicking the Next button.

You need to deploy an application gateway named appgw1015 to meet the following requirements:

Load balance internal IP traffic to the Azure virtual machines connected to subnet0. Provide a Service Level Agreement (SLA) of 99,99 percent availability for the Azure virtual machines.

What should you do from the Azure portal?

A. See the Below

B. See the Below

Correct Answer: A

Step 1:

Click New found on the upper left-hand corner of the Azure portal.

Step 2:

Select Networking and then select Application Gateway in the Featured list.

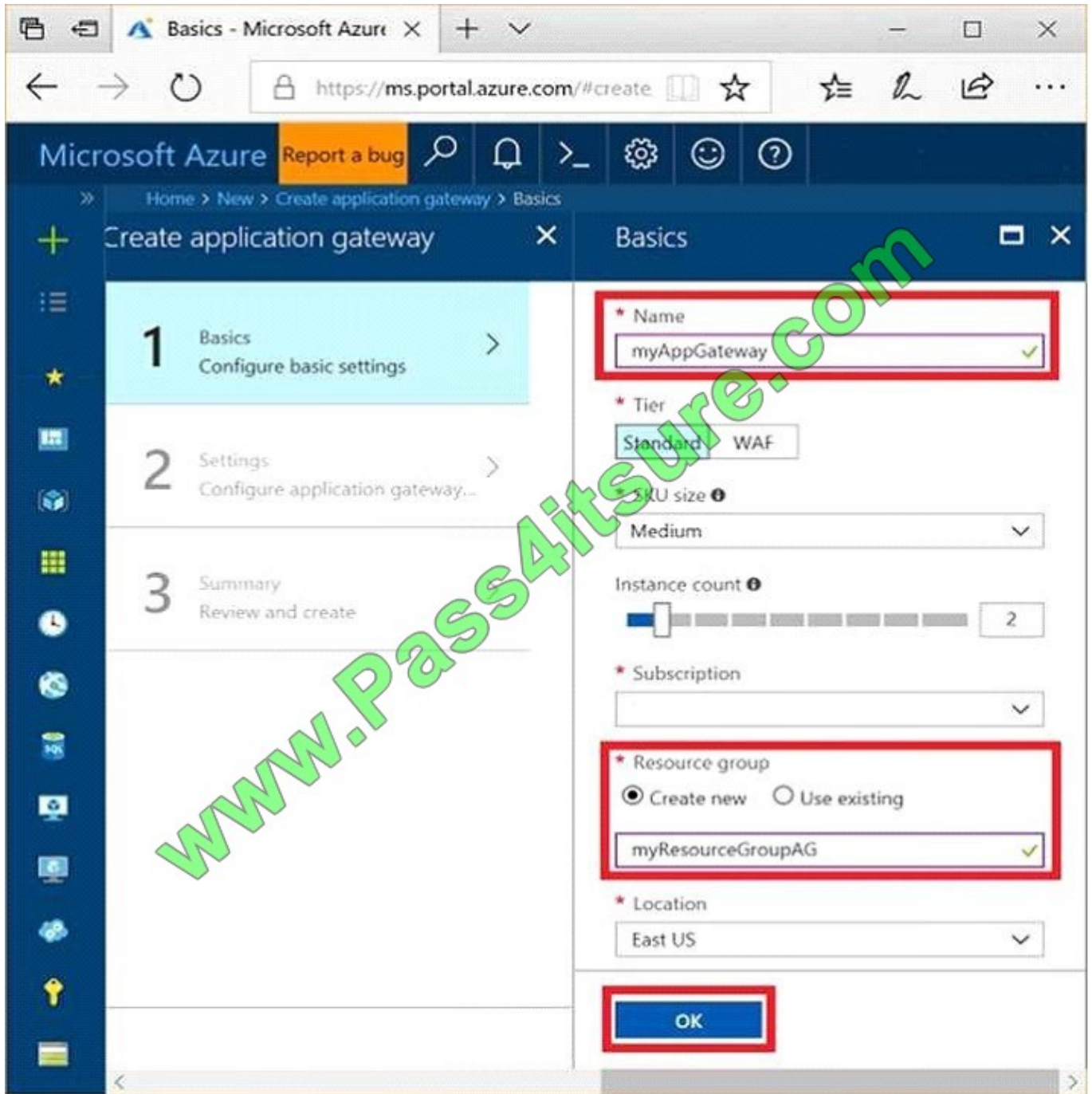
Step 3:

Enter these values for the application gateway:

appgw1015 - for the name of the application gateway.

SKU Size: Standard_V2

The new SKU [Standard_V2] offers autoscaling and other critical performance enhancements.



Step 4:

Accept the default values for the other settings and then click OK.

Step 5:

Click Choose a virtual network, and select subnet0.

References:

<https://docs.microsoft.com/en-us/azure/application-gateway/application-gateway-create-gateway-portal>



QUESTION 5

Note: This question is part of a series of questions that present the same scenario.

Each question in the series contains a unique solution. Determine whether the solution meets the stated goals.

You need to meet the vendor notification requirement.

Solution: Create and apply a custom outbound Azure API Management policy.

Does the solution meet the goal?

A. Yes

B. No

Correct Answer: B

References: <https://docs.microsoft.com/en-us/azure/api-management/api-management-howtoconfigure-notifications>

[Latest AZ-302 Dumps](#)

[AZ-302 Practice Test](#)

[AZ-302 Braindumps](#)



To Read the [Whole Q&As](#), please purchase the [Complete Version](#) from [Our website](#).

Try our product !

100% Guaranteed Success

100% Money Back Guarantee

365 Days Free Update

Instant Download After Purchase

24x7 Customer Support

Average 99.9% Success Rate

More than 800,000 Satisfied Customers Worldwide

Multi-Platform capabilities - [Windows](#), [Mac](#), [Android](#), [iPhone](#), [iPod](#), [iPad](#), [Kindle](#)

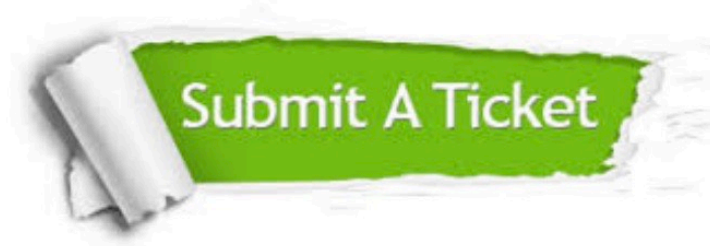
We provide exam PDF and VCE of Cisco, Microsoft, IBM, CompTIA, Oracle and other IT Certifications. You can view Vendor list of All Certification Exams offered:

<https://www.pass4itsure.com/allproducts>

Need Help

Please provide as much detail as possible so we can best assist you.

To update a previously submitted ticket:



 <p>One Year Free Update Free update is available within One Year after your purchase. After One Year, you will get 50% discounts for updating. And we are proud to boast a 24/7 efficient Customer Support system via Email.</p>	 <p>Money Back Guarantee To ensure that you are spending on quality products, we provide 100% money back guarantee for 30 days from the date of purchase.</p>	 <p>Security & Privacy We respect customer privacy. We use McAfee's security service to provide you with utmost security for your personal information & peace of mind.</p>
---	---	--

Any charges made through this site will appear as Global Simulators Limited.

All trademarks are the property of their respective owners.

Copyright © pass4itsure, All Rights Reserved.