



ACD200^{Q&As}

Appian Certified Senior Developer

Pass Appian ACD200 Exam with 100% Guarantee

Free Download Real Questions & Answers **PDF** and **VCE** file from:

<https://www.pass4itsure.com/acd200.html>

100% Passing Guarantee
100% Money Back Assurance

Following Questions and Answers are all new published by Appian
Official Exam Center

-  **Instant Download** After Purchase
-  **100% Money Back** Guarantee
-  **365 Days** Free Update
-  **800,000+** Satisfied Customers



**QUESTION 1**

You are referencing and using arrays of a CDT (Custom Data Type).

Which two statements are true? (Choose two.)

- A. Other Appian functions can be used within the square brackets "[]" when using dot notation to return specific data from the array.
- B. There is no difference between using "dot notation" and the index() function.
- C. An array of integers can be passed as the second parameter to the index() function to return the data at those position in the array.
- D. The function where contains can act on operands of different types.

Correct Answer: BC

The question is about referencing and using arrays of a CDT (Custom Data Type). The following statements are true:

There is no difference between using "dot notation" and the index() function. Both methods can be used to access elements of an array by their position. For example, if a is an array of CDTs, then a[1] and index(a, 1) will return the same

element.

An array of integers can be passed as the second parameter to the index() function to return the data at those positions in the array. For example, if a is an array of CDTs, then index(a, {1, 3, 5}) will return an array of CDTs containing the

elements at positions 1, 3, and 5 in a.

The following statements are false:

Other Appian functions can be used within the square brackets "[]" when using dot notation to return specific data from the array. This is not possible, as dot notation only accepts integers or integer arrays as indices. For example, if a is an

array of CDTs, then a[length(a)] will cause an error, as length(a) is not a valid index. The function wherecontains can act on operands of different types. This is not true, as wherecontains only works on operands of the same type. For

example, if a is an array of CDTs and b is an array of integers, then wherecontains(a, b) will cause an error, as a and b are not of the same type.

References:

Dot Notation

index()

wherecontains()

QUESTION 2

Which of the following is a sign that an application's performance is degrading and should be addressed with changes



to the application design?

- A. Integration calls to an external system are consistently returning an HTTP status code of 500.
- B. Three of the top five most executed process models have a low completion percentage.
- C. The number of tasks assigned to users has increased from 1 per day to 5 per day.
- D. The number of objects in the Application has increased from about 100 to about 500.

Correct Answer: B

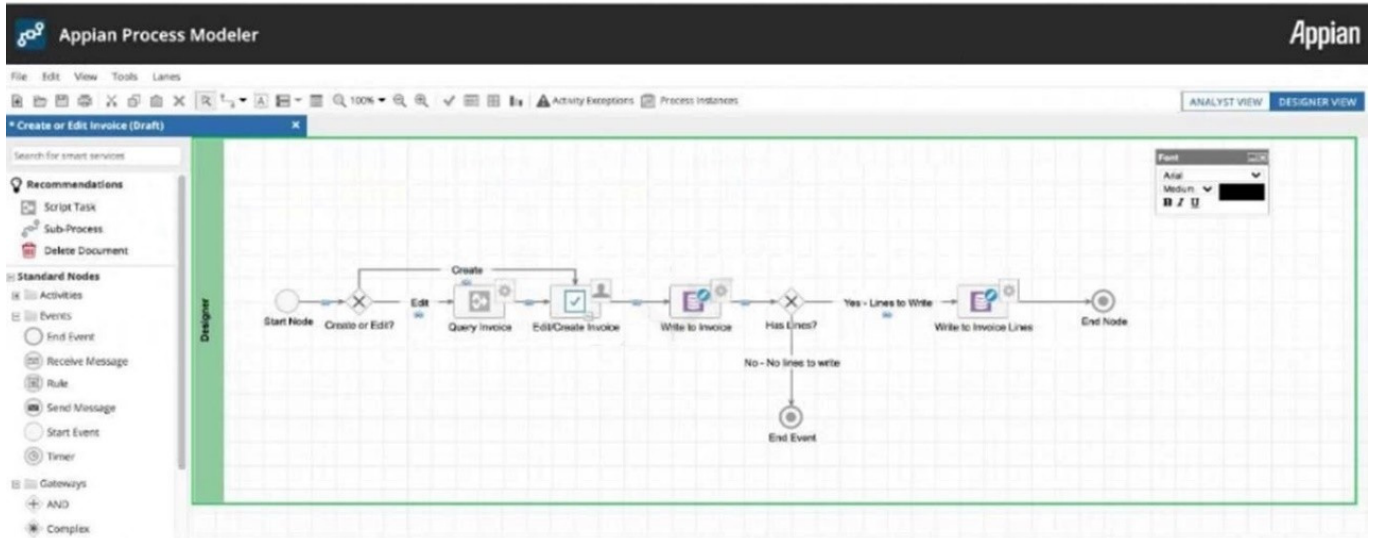
The question is about a sign that an application's performance is degrading and should be addressed with changes to the application design. The following is a sign of this: Three of the top five most executed process models have a low completion percentage. This means that a large proportion of the process instances are not reaching the end event, either because they are taking too long to complete, or because they are encountering errors or exceptions. This can affect the performance of the application, as it can consume more memory and resources, and reduce the availability and reliability of the application. You should review the process model design and identify the causes of the low completion rate, and make changes to improve the process efficiency and error handling. The following are not signs of performance degradation that require changes to the application design: Integration calls to an external system are consistently returning an HTTP status code of 500. This means that the external system is experiencing an internal server error, which is not related to the application design. You should contact the external system provider and report the issue, or implement a fallback or retry mechanism in your integration logic. The number of tasks assigned to users has increased from 1 per day to 5 per day. This means that the workload or demand for the application has increased, which is not necessarily a sign of performance degradation. You should monitor the task completion rate and user feedback to see if the increase in tasks is affecting the user experience or satisfaction, and adjust the task assignment or prioritization logic if needed. The number of objects in the Application has increased from about 100 to about 500. This means that the application has grown in size and complexity, which is not necessarily a sign of performance degradation. You should follow the best practices for application design and maintenance, such as using folders, prefixes, dependencies, and documentation, to keep the application organized and manageable. References: Process Model Metrics HTTP Status Codes Task Report Application Design

QUESTION 3

You are on a project where the goal is to use Appian Sites to create and edit invoices issued to customers.

This process model is being used as a related action, to edit an Invoice. You have already created a record for invoices.

Review the following image:



Which two suggestions regarding this process are valid? (Choose two.)

- A. We should consider adding a timer exception which skips the "Edit/Credit Invoice" node after 24 hours.
- B. We should add this process model as a related action on the Invoices record called "Edit Invoice."
- C. We should add two pages to the site, one of which is a Record List of Invoices, and the other which has this process model as a Report.
- D. To improve performance, we should consider removing activity chaining from all flows.

Correct Answer: AB

Two valid suggestions regarding this process are: We should consider adding a timer exception which skips the "Edit/Credit Invoice" node after 24 hours. This suggestion would improve the user experience by preventing users from editing or crediting an invoice that is too old or has been already processed by another system. A timer exception can be added to any activity node to specify a deadline for completing the task. If the deadline is reached, the process flow will follow the exception path instead of the normal path. We should add this process model as a related action on the Invoices record called "Edit Invoice." This suggestion would make it easier for users to access and execute this process from the context of a specific invoice record. A related action is a process model that can be initiated from a record or a record list in Tempo or sites. A related action can use record data as inputs and update record data as outputs.

References: Timer Exception, Create Record Actions

QUESTION 4

You are facing issues when attempting to establish a SAML connection to an identity provider. You determine you need to increase the authentication-specific logging levels so that you can view trace level statements about the connection attempt in the application server log.

Which property file should you update to modify the log output level? (Choose the best answer.)

- A. commons-logging.Properties
- B. appian_log4j.properties
- C. logging.properties



D. custom.properties

Correct Answer: B

The appian_log4j.properties file is used to configure the logging levels for Appian components, including authentication. You can modify this file to increase or decrease the verbosity of the log output for different categories. For example, to enable trace-level logging for SAML authentication, you can add this line to the file:

log4j.logger.com.appiancorp.suite.authentication.saml=TRACE References: [Appian Logging Configuration], [SAML Troubleshooting]

QUESTION 5

In Scrum, who is the right person responsible for prioritizing product backlog? (Choose the best answer.)

- A. Tester
- B. Product Owner
- C. Lead Developer
- D. Product Manager

Correct Answer: B

In Scrum, the product owner is the person who represents the voice of the customer and the stakeholders. The product owner is responsible for defining and prioritizing the product backlog, which is a list of features, requirements, enhancements, and fixes that need to be delivered by the team. The product owner collaborates with the team and the scrum master to ensure that the product backlog is clear, valuable, and aligned with the product vision and goals.

[Latest ACD200 Dumps](#)

[ACD200 VCE Dumps](#)

[ACD200 Exam Questions](#)