



9L0-415^{Q&As}

OS X Support Essentials 10.9

Pass Apple 9L0-415 Exam with 100% Guarantee

Free Download Real Questions & Answers **PDF** and **VCE** file from:

<https://www.pass4itsure.com/9L0-415.html>

100% Passing Guarantee
100% Money Back Assurance

Following Questions and Answers are all new published by Apple
Official Exam Center

-  **Instant Download** After Purchase
-  **100% Money Back** Guarantee
-  **365 Days** Free Update
-  **800,000+** Satisfied Customers





QUESTION 1

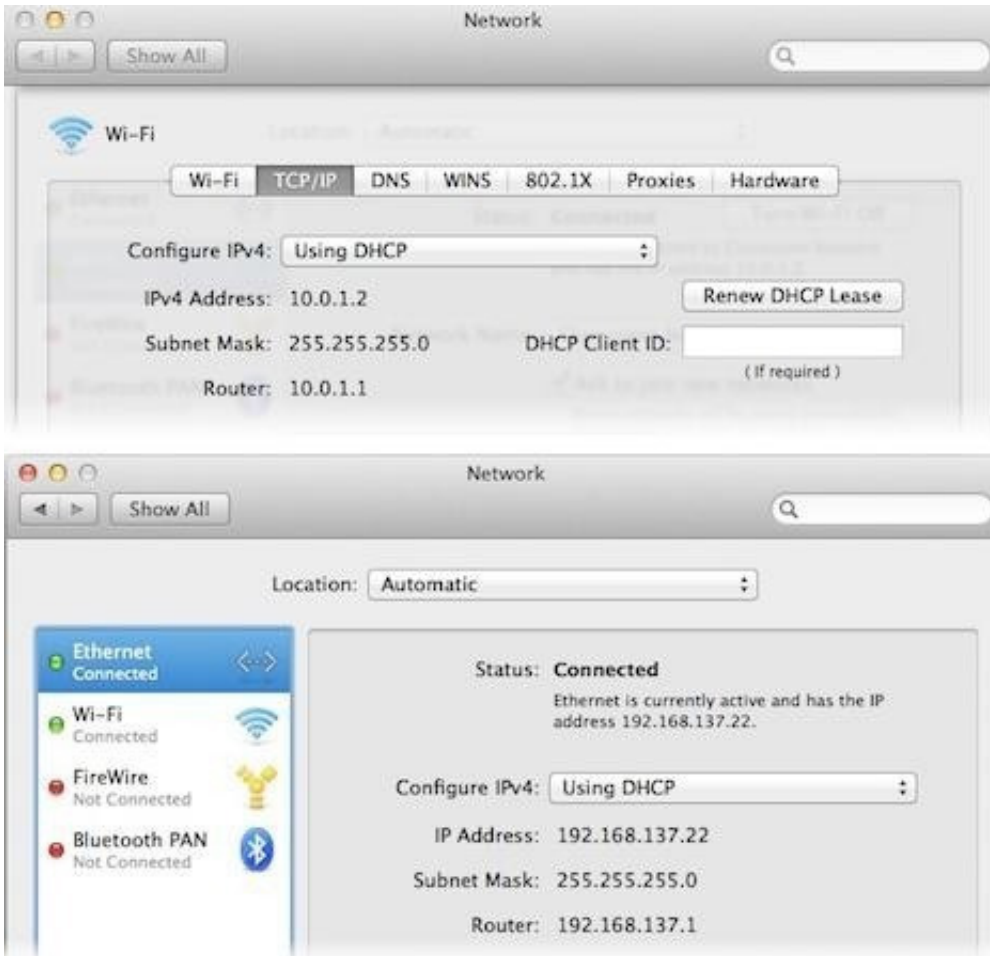
What steps should you use when troubleshooting application issues?

- A. The optional firewall settings let you control whether signed applications are automatically allowed through the firewall, control the list of allowed (or denied) applications, and enable stealth mode (which means your Mac won't respond to any unsolicited connections).
- B. The four system resource domains are: User, containing applications and system resources specific to each user account; Local, containing applications and system resources available to all users on the local Mac Network (optional), containing applications and system resources available to any Mac that has an automated network share; System, containing applications and system resources required to provide basic system functionality.
- C. General application troubleshooting steps include restarting the application, trying another known working document, trying another user account, checking log files, deleting cache files, replacing preference files, and replacing application resources.
- D. Gatekeeper can restrict software to Mac App Store applications only, or Mac App Store and identified developer applications only (this is the default option), or any application regardless of origin.

Correct Answer: C

QUESTION 2

Review the screenshots of a Mac computer's Network pane, and then answer the question below.



If a Mac with the network configuration shown above needs to initiate a connection to a server at address 17.20.8.9, which interface will it use to do so?

- A. Neither interface: this computer cannot communicate with the server at 17.20.8.9.
- B. Wi-Fi
- C. Either interface may be used, based on automatic routing.
- D. Ethernet

Correct Answer: C

QUESTION 3

A new 5 MB file was backed up by Time Machine yesterday. Today the file was edited, and has grown to 6 MB. It is about to be backed up by Time Machine again. How does Time Machine perform this backup?

- A. Time Machine copies the 6 MB file to the backup drive, and deletes the original backup copy of the file from the backup drive.
- B. Time Machine copies the 6 MB file to the backup drive, and keeps both the new backup file and the original backup file on the backup drive.



C. Time Machine identifies the 1 MB of file changes, copies those changes to a new file on the backup drive, and keeps both the new backup file and the original backup file.

D. Time Machine identifies the 1 MB of file changes, copies those changes to a new file on the backup drive, then creates a 500 KB parity file, and keeps all three files: the two new files representing the 1 MB of file changes, and the original backup file.

Correct Answer: C

QUESTION 4

In Network preferences, all network service interfaces with a green status indicator are being used for network activities. However, again, all network traffic that isn't better handled via a local connection is sent to the primary network service interface. The primary network service interface is the top most active interface in the listing.

A. How can an OS X system automatically connect to a Wi-Fi network?

B. Which five network file services can you connect to from the Finder's Connect to Server dialog?

C. In Network preferences, how can you tell which interface is currently being used for network activities?

D. How can you verify basic connectivity to another network host?

Correct Answer: C

QUESTION 5

How can a user with the short name anna exclude the /Users/anna/Downloads/ folder from Time Machine backups?

A. Open Time Machine, choose Preferences from the Time Machine menu, click the Exclusions tab, click the Add (+) button, navigate to the /Users/anna/Downloads/ folder, and click Submit.

B. Open the Time Machine pane of System Preferences, click Options, and add the /Users/anna/Downloads/ folder to the list of excluded items.

C. Control-click the anna account's Downloads folder in the Finder, click the Sharing and Permissions disclosure button, click the Add (+) button, add the Time Machine user to the list of users, and set the Time Machine user's access to "No Access."

D. In Terminal, execute the command `sudo defaults write /Library/Preferences/com.apple.TimeMachine excludedFolders -array-add /Users/anna/Downloads`.

Correct Answer: B
